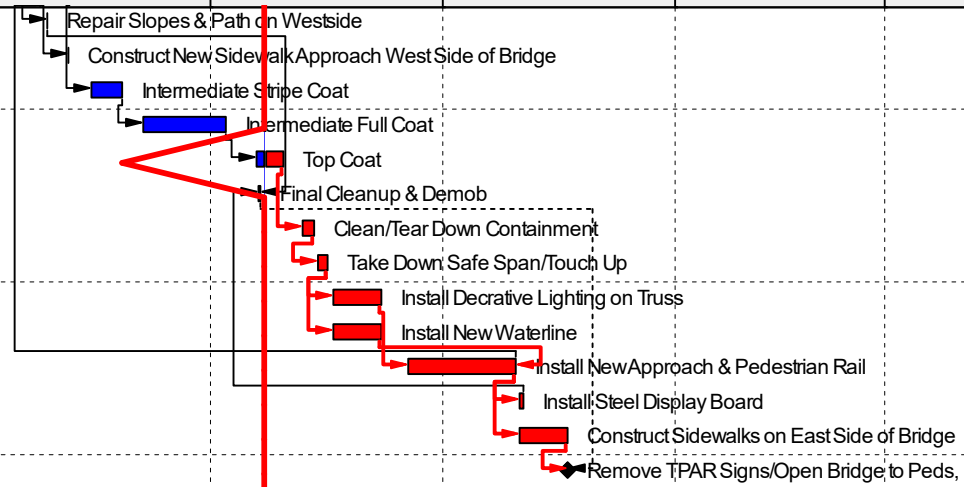


Activity ID	Activity Name	Original Duration	Actual Duration	Start	Finish	Remaining Duration	Total Float	Qtr 4, 2021				Qtr 1, 2022			Qtr 2, 2022
								Oct	Nov	Dec	Jan	Feb	Mar	Apr	
															17-Jan-22
81-Rev 2 North Santiam River (Mill City) Pedestrian Bridge		288	261	02-Dec-20A	17-Jan-22	27	-53								
A1000	Bid Submitted	1	1	02-Dec-20	02-Dec-20	0									
A1010	Notice of Award	1	1	15-Dec-20	15-Dec-20	0									
A1020	Contracts Executed	1	1	26-Jan-21	26-Jan-21	0									
A1030	Notice to Proceed	1	1	28-Jan-21	28-Jan-21	0									
A1040	Pre-construction Submittals	1	1	29-Jan-21	29-Jan-21	0									
A1060	Initial Project Survey	1	1	02-Feb-21	02-Feb-21	0									
A1050	Pre-construction Conference	1	1	05-Feb-21	05-Feb-21	0									
A1070	Precast Shop Drawings	1	1	10-Feb-21	10-Feb-21	0									
A1080	Steel Bent Shop Drawings	1	0	18-Feb-21	18-Feb-21	0									
A1090	Precast Fabrication	20	20	18-Feb-21	18-Mar-21	0									
A1110	Mobilize to Site	2	1	01-Mar-21	02-Mar-21	0									
A1120	Setup TPAR Signs/Close Bridge to Peds	0	0	01-Mar-21		0									
A1130	Install Erosion Control	2	2	01-Mar-21	02-Mar-21	0									
A1140	Construct Temp Work Access Platform Westside	5	3	02-Mar-21	05-Mar-21	0									
A1490	Remove Existing Waterline Span 8	2	1	04-Mar-21	05-Mar-21	0									
A1180	Remove Timber Decking Span 8	2	4	08-Mar-21	12-Mar-21	0									
A1190	Install Deck Formwork Span 8	5	10	16-Mar-21	30-Mar-21	0									
A1100	Steel Bent Procurement + Fabrication	46	64	17-Mar-21	15-Jun-21	0									
A1150	Remove Existing Timber Decking Spans 1-7	5	5	31-Mar-21	07-Apr-21	0									
A1160	Remove Existing Timber Bents 1-7	3	5	09-Apr-21	16-Apr-21	0									
A1470	Construct Bent 1 CIP Abutments/Wingwalls/Backwalls	5	5	21-Apr-21	27-Apr-21	0									
A1210	Set up Signs According to TCP to Close One Lane N 1st	0	0	26-Apr-21		0									
A1220	Remove Timber Decking Spans 9-12	3	3	26-Apr-21	28-Apr-21	0									
A1250	Remove Existing Timber Bents 10-13	3	3	29-Apr-21	03-May-21	0									
A1480	Construct Bent 13 Abutment/Wingwalls/Backwalls	5	11	04-May-21	19-May-21	0									
A1260	Install New Steel Bents 10-13	10	7	20-May-21	31-May-21	0									
A1300	Set New Precast Girders Spans 9-12	2	2	03-Jun-21	04-Jun-21	0									
A1530	Form & Pour Diaphragms Spans 9-12	5	5	07-Jun-21	11-Jun-21	0									
A1170	Construct New Steel Bents 7-4	15	9	14-Jun-21	25-Jun-21	0									
A1310	Install Deck Formwork Spans 9-12	5	5	14-Jun-21	18-Jun-21	0									
A1200	Remove Paint from Top of Beams & Weld Shear Studs	7	4	21-Jun-21	25-Jun-21	0									
A1230	Set New Precast Girders Spans 7-4	3	4	28-Jun-21	02-Jul-21	0									
A1580	Set Steel Bent 3&2	2	2	07-Jul-21	08-Jul-21	0									
A1590	Set Girders in Spans 3-1	2	2	09-Jul-21	12-Jul-21	0									
A1290	Pour & Cure New Concrete Deck Over Span 8	10	13	20-Jul-21	06-Aug-21	0									
A1320	Pour & Cure New Deck Over Spans 9-12	10	13	20-Jul-21	06-Aug-21	0									
A1520	Form & Pour Diaphragms Spans 1-7	5	4	26-Jul-21	30-Jul-21	0									
A1240	Install Deck Formwork Spans 1-7	7	8	02-Aug-21	12-Aug-21	0									
A1570	Strip Deck Forms Spans 9-12	5	5	03-Aug-21	09-Aug-21	0									
A1450	Install Paint Containment	5	5	03-Aug-21	09-Aug-21	0									
A1280	Pour & Cure New Concrete Deck Over Spans 1-7	10	10	13-Aug-21	27-Aug-21	0									
A1550	Strip Deck Forms Spans 1-7	10	10	02-Sep-21	16-Sep-21	0									
A1560	Strip Deck Forms Span 8	2	1	16-Sep-21	17-Sep-21	0									
A1360	Blast/Full Prime Coat	15	21	06-Oct-21	04-Nov-21	0									
A1370	Primer Stripe Coat/Clean Containment	4	5	05-Nov-21	12-Nov-21	0									
A1400	Remove Temp Work Access Platform Westside	2	0	08-Nov-21	08-Nov-21	0									

Activity ID	Activity Name	Original Duration	Actual Duration	Start	Finish	Remaining Duration	Total Float	Classic Schedule Layout											
								Qtr 4, 2021			Qtr 1, 2022			Qtr 2, 2022					
								Oct	Nov	Dec	Jan	Feb	Mar	Apr					
A1420	Repair Slopes & Path on Westside	3	0	09-Nov-21	09-Nov-21	0													
A1340	Construct New Sidewalk Approach West Side of Bridge	5	0	12-Nov-21	12-Nov-21	0													
A1500	Intermediate Stripe Coat	4	4	15-Nov-21	19-Nov-21	0													
A1540	Intermediate Full Coat	2	7	22-Nov-21	03-Dec-21	0													
A1610	Top Coat	3	1	07-Dec-21	10-Dec-21	3	-53												
A1430	Final Cleanup & Demob	1	1	07-Dec-21	07-Dec-21	0													
A1620	Clean/Tear Down Containment	2	0	13-Dec-21	14-Dec-21	2	-53												
A1630	Take Down Safe Span/Touch Up	2	0	15-Dec-21	16-Dec-21	2	-53												
A1380	Install Decrative Lighting on Truss	5	0	17-Dec-21	23-Dec-21	5	-53												
A1510	Install New Waterline	5	0	17-Dec-21	23-Dec-21	5	-46												
A1390	Install New Approach & Pedestrian Rail	10	0	27-Dec-21	10-Jan-22	10	-53												
A1410	Install Steel Display Board	1	0	11-Jan-22	11-Jan-22	1	-49												
A1640	Construct Sidewalks on East Side of Bridge	5	0	11-Jan-22	17-Jan-22	5	-53												
A1440	Remove TPAR Signs/Open Bridge to Peds	0	0		17-Jan-22	0	-53												



█ Actual Level of Effort █ Remaining Work ◆ Milestone
█ Actual Work █ Critical Remaining Work ▶ summary