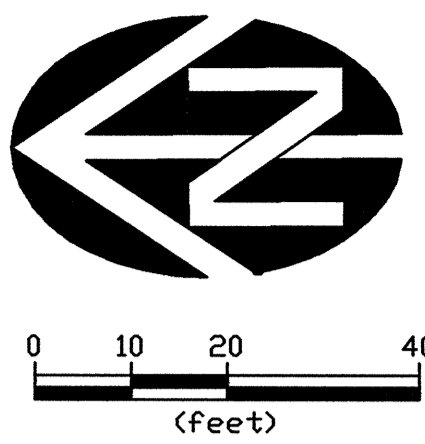


AS-BUILT
 COMPILED FROM:
 FINAL PROOF SURVEY _____
 DATA FURNISHED BY CONTRACTOR X
 FIELD INSPECTION RECORDS X
WESTECH ENGINEERING, INC.
 DATE: SEPT. 04 BY: MDP

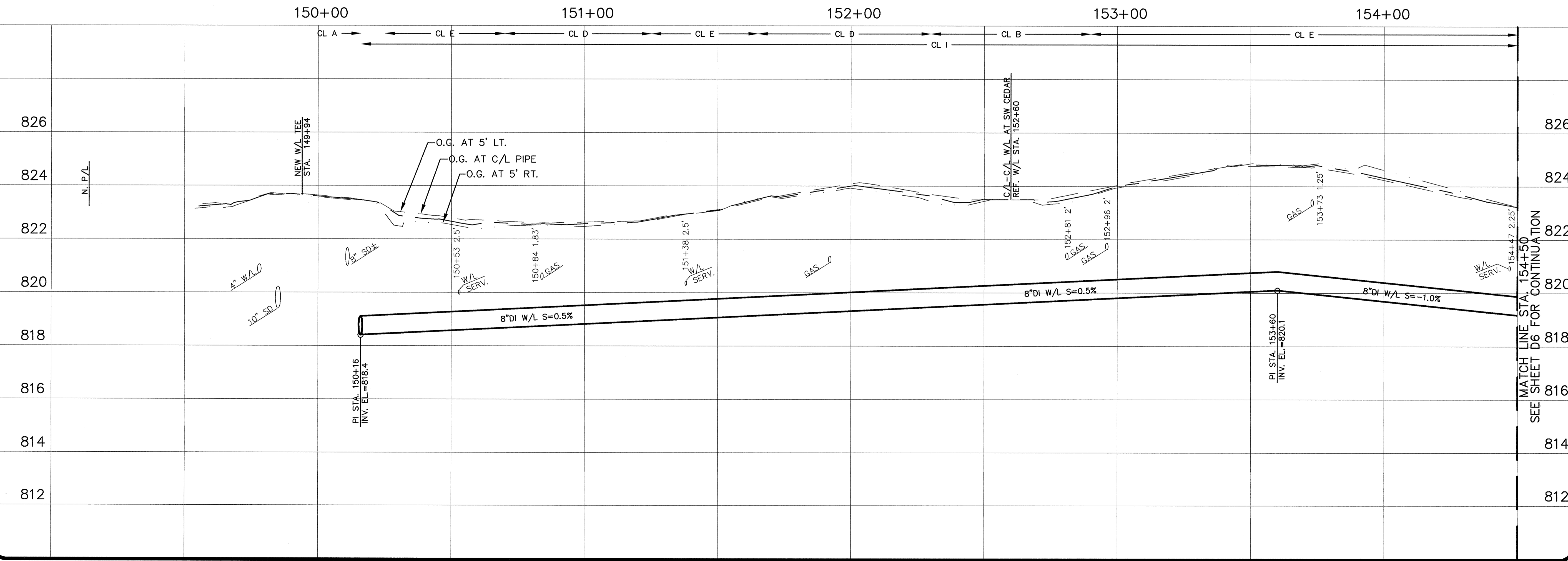


NO.	DATE	DESCRIPTION	BY
1	9/29/03	AGENCY REVIEW SET	RCE
2	9/29/03	BID SET	RCE
3	1/6/03	BROADWAY ALIGNMENT CHANGE	RCE

VERIFY SCALE
 BAR IS ONE INCH ON ORIGINAL DRAWING
 IF NOT ONE INCH ON THIS SCALE ACCORDINGLY

DATE/MAR. 2003

AS-CONSTRUCTED
 REGISTERED PROFESSIONAL ENGINEER
 19178PE
 OREGON
 W. F. MOYD C.
 CERT. EXP. DECEMBER 31, 2003



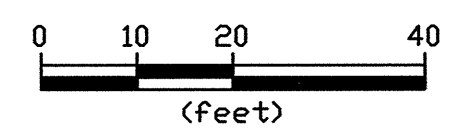
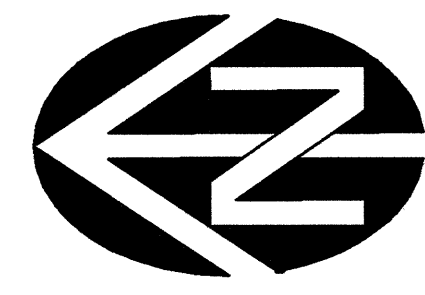
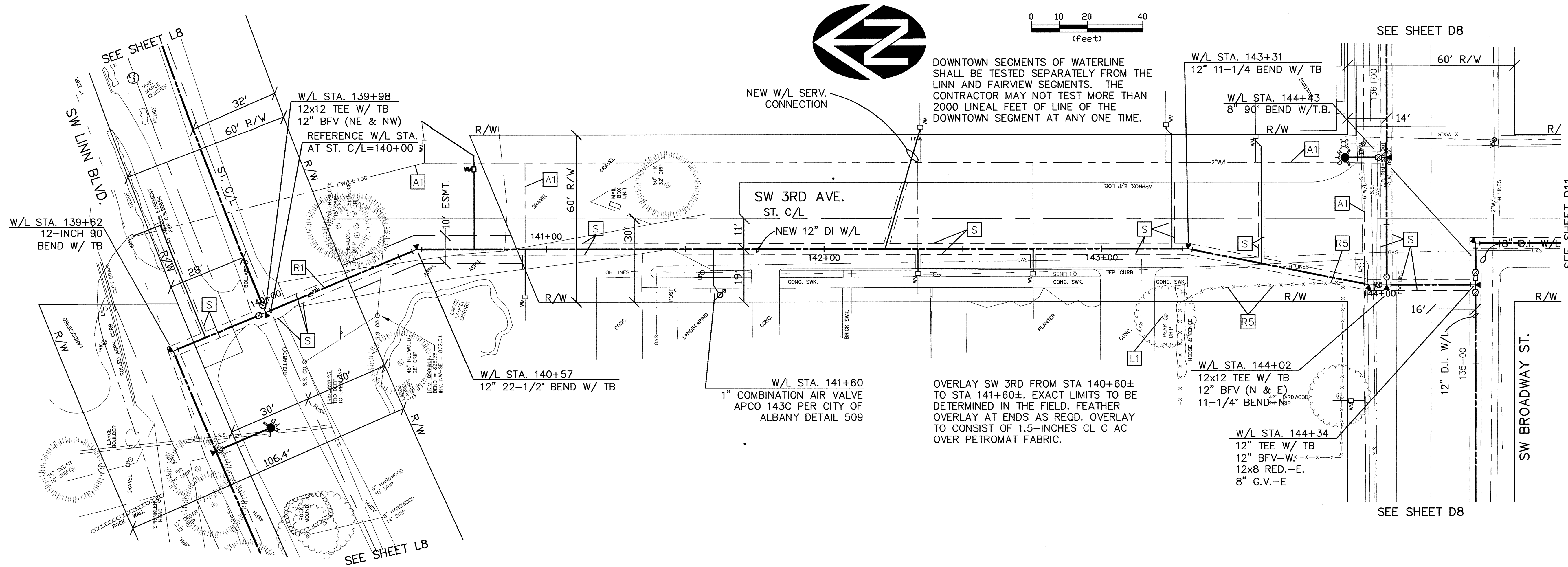
WESTECH ENGINEERING, INC.
 CONSULTING ENGINEERS AND PLANNERS

3841 Fairview Industrial Dr. S.E., Suite 100, Salem, OR 97302
 Phone: (503) 585-2474 Fax: (503) 585-3986
 E-mail: westech@westech-eng.com

CITY OF MILL CITY, OREGON
 MILL CITY WATER IMP. PROJECT-WATERLINES
SW 5TH AVE.
PLAN AND PROFILE
 STA. 149+50 TO STA. 154+50

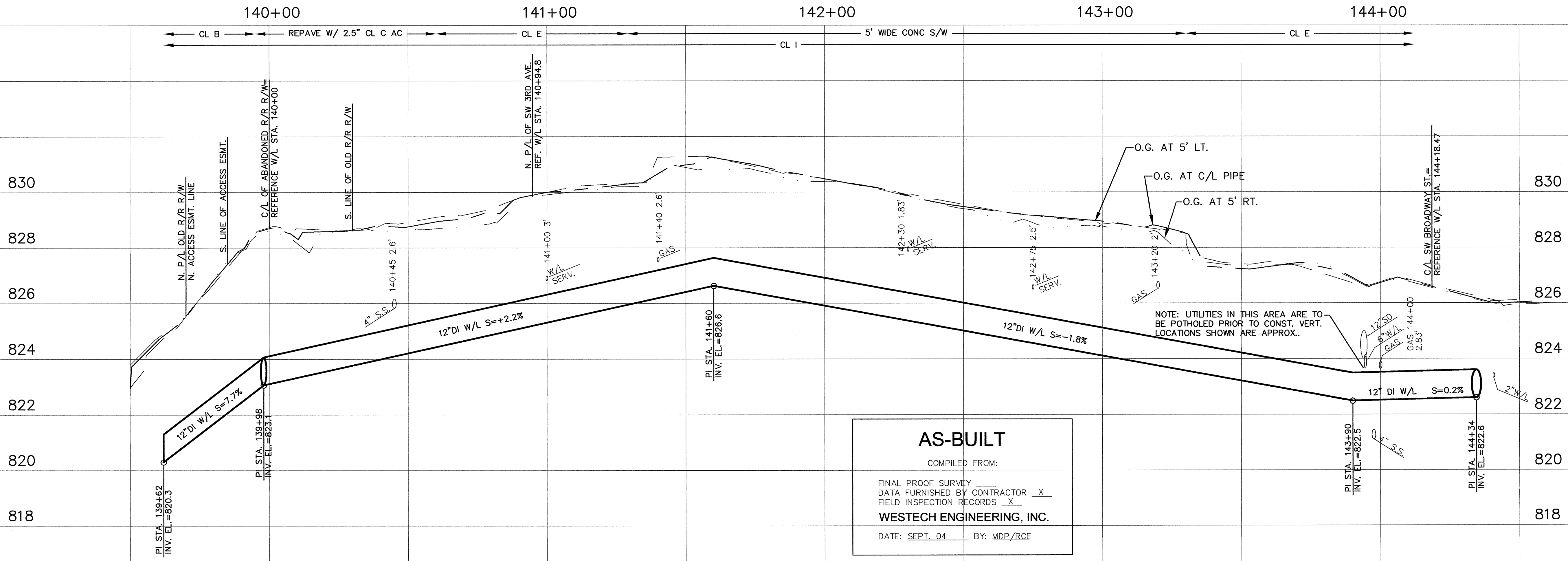
SHEET
 D5 OF 15
JOB NUMBER
 1780.4060.0

Doc: 28_2004 - 9:44am
 R:\Draws\Mill City\Water Project\Waterlines\CIVIL\PLOTS\SW-3RD-01.dwg (LAYOUT Tab)



DOWNTOWN SEGMENTS OF WATERLINE SHALL BE TESTED SEPARATELY FROM THE LINN AND FAIRVIEW SEGMENTS. THE CONTRACTOR MAY NOT TEST MORE THAN 2000 LINEAL FEET OF LINE OF THE DOWNTOWN SEGMENT AT ANY ONE TIME.

OVERLAY SW 3RD FROM STA 140+60± TO STA 141+60±. EXACT LIMITS TO BE DETERMINED IN THE FIELD. FEATHER OVERLAY AT ENDS AS REQD. OVERLAY TO CONSIST OF 1.5-INCHES CL C AC OVER PETROMAT FABRIC.



AS-BUILT
 COMPILED FROM:
 FINAL PROOF SURVEY _____
 DATA FURNISHED BY CONTRACTOR X
 FIELD INSPECTION RECORDS X
WESTTECH ENGINEERING, INC.
 DATE: SEPT. 04 BY: MDP/RCE

NO.	DATE	DESCRIPTION	BY
1	5/20/03	AGENCY REVIEW SET	RCE
2	6/7/03	BID SET	RCE
3	11/7/03	BROADWAY ALIGNMENT CHANGE	RCE

VERIFY SCALE
 BAR IS ONE INCH ON ORIGINAL DRAWING
 IF NOT ONE INCH ON SCALES ACCORDINGLY

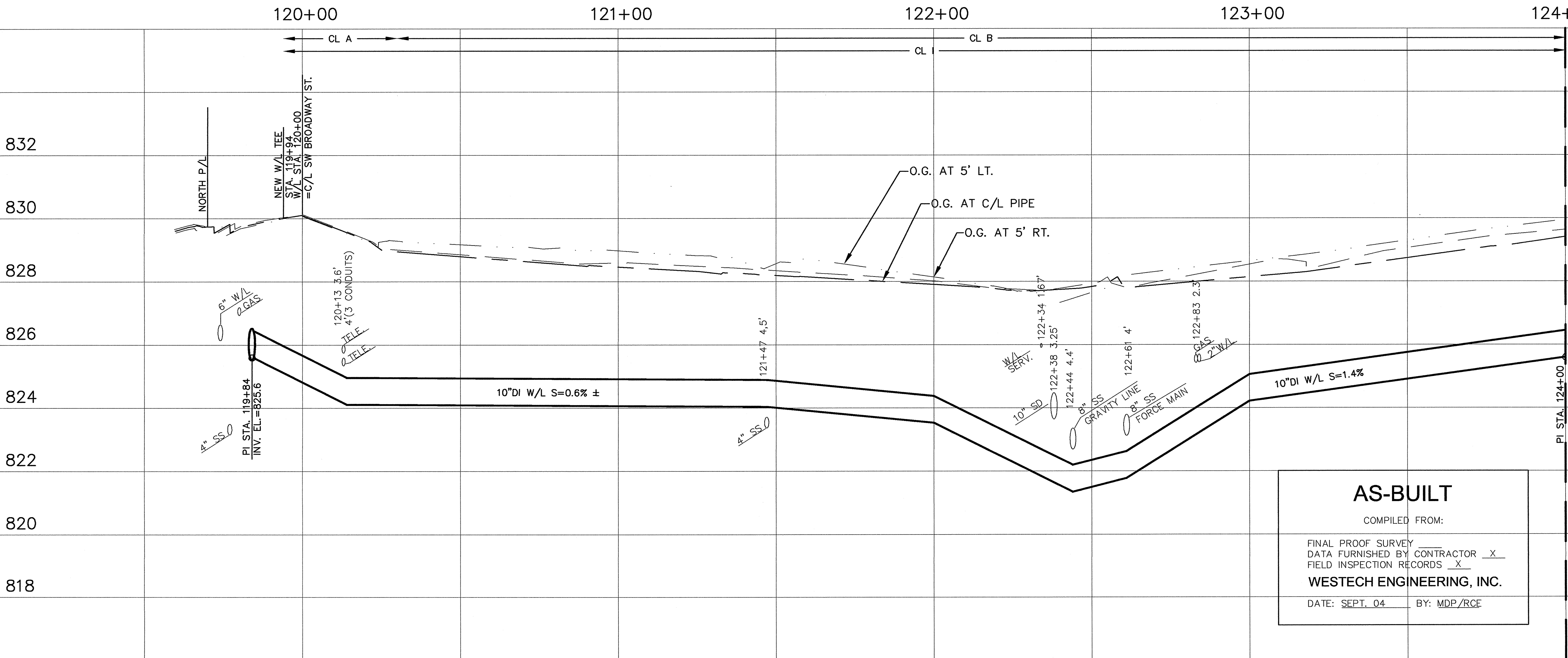
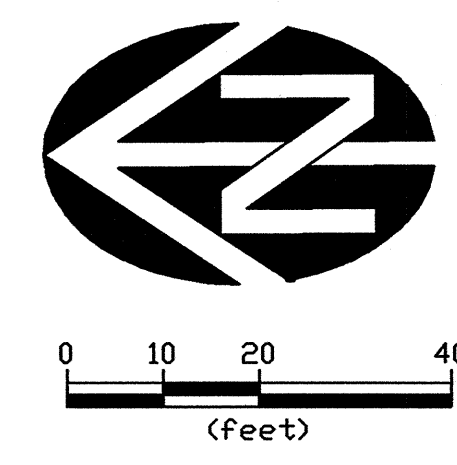
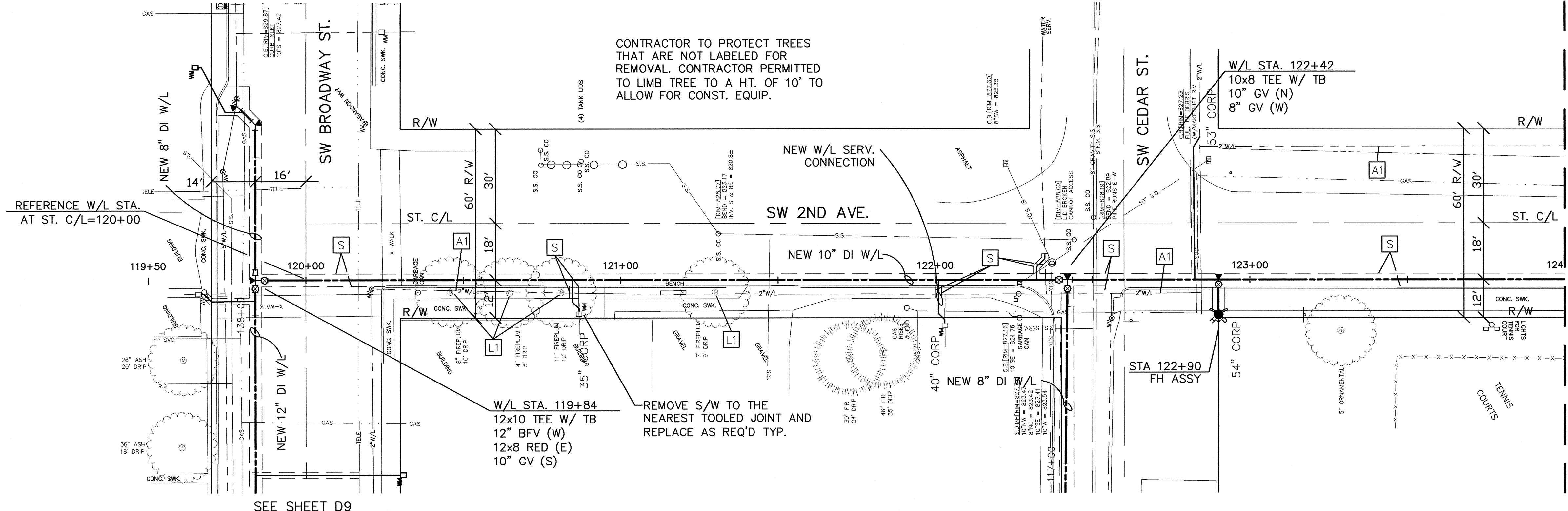
AS-CONSTRUCTED
 WESTTECH ENGINEERING, INC.
 3941 Fairview Industrial Dr. S.E., Suite 100, Salem, OR 97302
 Phone: (503) 585-2474 Fax: (503) 585-3986
 E-mail: westtech@westtech-eng.com

WESTTECH ENGINEERING, INC.
 CONSULTING ENGINEERS AND PLANNERS

CITY OF MILL CITY, OREGON
 MILL CITY WATER IMP. PROJECT - WATERLINES
 SW 3RD AVE.
 PLAN AND PROFILE
 STA. 139+50 TO END

CITY OF MILL CITY, OREGON
 MILL CITY WATER IMP. PROJECT - WATERLINES
 SW 3RD AVE.
 PLAN AND PROFILE
 STA. 139+50 TO END

SHEET
 D10 OF 15
 JOB NUMBER
 1780.4060.0



VERIFY SCALE	NO.	DATE	DESCRIPTION	BY
BAR IS ONE INCH ON ORIGINAL DRAWING	1	5/20/03	AGENCY REVIEW SET	RCE
IF NOT ONE INCH ON SCALES ACCORDINGLY	2	6/26/03	BID SET	RCE
	3	11/26/03	BROADWAY ALIGNMENT CHANGE	RCE
	4	11/26/03	BROADWAY ALIGNMENT CHANGE	RCE
	5	11/26/03	BROADWAY ALIGNMENT CHANGE	RCE
	6	11/26/03	BROADWAY ALIGNMENT CHANGE	RCE
	7	11/26/03	BROADWAY ALIGNMENT CHANGE	RCE
	8	11/26/03	BROADWAY ALIGNMENT CHANGE	RCE
	9	11/26/03	BROADWAY ALIGNMENT CHANGE	RCE
	10	11/26/03	BROADWAY ALIGNMENT CHANGE	RCE
	11	11/26/03	BROADWAY ALIGNMENT CHANGE	RCE
	12	11/26/03	BROADWAY ALIGNMENT CHANGE	RCE
	13	11/26/03	BROADWAY ALIGNMENT CHANGE	RCE
	14	11/26/03	BROADWAY ALIGNMENT CHANGE	RCE
	15	11/26/03	BROADWAY ALIGNMENT CHANGE	RCE
	16	11/26/03	BROADWAY ALIGNMENT CHANGE	RCE
	17	11/26/03	BROADWAY ALIGNMENT CHANGE	RCE
	18	11/26/03	BROADWAY ALIGNMENT CHANGE	RCE
	19	11/26/03	BROADWAY ALIGNMENT CHANGE	RCE
	20	11/26/03	BROADWAY ALIGNMENT CHANGE	RCE
	21	11/26/03	BROADWAY ALIGNMENT CHANGE	RCE
	22	11/26/03	BROADWAY ALIGNMENT CHANGE	RCE
	23	11/26/03	BROADWAY ALIGNMENT CHANGE	RCE
	24	11/26/03	BROADWAY ALIGNMENT CHANGE	RCE
	25	11/26/03	BROADWAY ALIGNMENT CHANGE	RCE
	26	11/26/03	BROADWAY ALIGNMENT CHANGE	RCE
	27	11/26/03	BROADWAY ALIGNMENT CHANGE	RCE
	28	11/26/03	BROADWAY ALIGNMENT CHANGE	RCE
	29	11/26/03	BROADWAY ALIGNMENT CHANGE	RCE
	30	11/26/03	BROADWAY ALIGNMENT CHANGE	RCE
	31	11/26/03	BROADWAY ALIGNMENT CHANGE	RCE
	32	11/26/03	BROADWAY ALIGNMENT CHANGE	RCE
	33	11/26/03	BROADWAY ALIGNMENT CHANGE	RCE
	34	11/26/03	BROADWAY ALIGNMENT CHANGE	RCE
	35	11/26/03	BROADWAY ALIGNMENT CHANGE	RCE
	36	11/26/03	BROADWAY ALIGNMENT CHANGE	RCE
	37	11/26/03	BROADWAY ALIGNMENT CHANGE	RCE
	38	11/26/03	BROADWAY ALIGNMENT CHANGE	RCE
	39	11/26/03	BROADWAY ALIGNMENT CHANGE	RCE
	40	11/26/03	BROADWAY ALIGNMENT CHANGE	RCE
	41	11/26/03	BROADWAY ALIGNMENT CHANGE	RCE
	42	11/26/03	BROADWAY ALIGNMENT CHANGE	RCE
	43	11/26/03	BROADWAY ALIGNMENT CHANGE	RCE
	44	11/26/03	BROADWAY ALIGNMENT CHANGE	RCE
	45	11/26/03	BROADWAY ALIGNMENT CHANGE	RCE
	46	11/26/03	BROADWAY ALIGNMENT CHANGE	RCE
	47	11/26/03	BROADWAY ALIGNMENT CHANGE	RCE
	48	11/26/03	BROADWAY ALIGNMENT CHANGE	RCE
	49	11/26/03	BROADWAY ALIGNMENT CHANGE	RCE
	50	11/26/03	BROADWAY ALIGNMENT CHANGE	RCE
	51	11/26/03	BROADWAY ALIGNMENT CHANGE	RCE
	52	11/26/03	BROADWAY ALIGNMENT CHANGE	RCE
	53	11/26/03	BROADWAY ALIGNMENT CHANGE	RCE
	54	11/26/03	BROADWAY ALIGNMENT CHANGE	RCE
	55	11/26/03	BROADWAY ALIGNMENT CHANGE	RCE
	56	11/26/03	BROADWAY ALIGNMENT CHANGE	RCE
	57	11/26/03	BROADWAY ALIGNMENT CHANGE	RCE
	58	11/26/03	BROADWAY ALIGNMENT CHANGE	RCE
	59	11/26/03	BROADWAY ALIGNMENT CHANGE	RCE
	60	11/26/03	BROADWAY ALIGNMENT CHANGE	RCE
	61	11/26/03	BROADWAY ALIGNMENT CHANGE	RCE
	62	11/26/03	BROADWAY ALIGNMENT CHANGE	RCE
	63	11/26/03	BROADWAY ALIGNMENT CHANGE	RCE
	64	11/26/03	BROADWAY ALIGNMENT CHANGE	RCE
	65	11/26/03	BROADWAY ALIGNMENT CHANGE	RCE
	66	11/26/03	BROADWAY ALIGNMENT CHANGE	RCE
	67	11/26/03	BROADWAY ALIGNMENT CHANGE	RCE
	68	11/26/03	BROADWAY ALIGNMENT CHANGE	RCE
	69	11/26/03	BROADWAY ALIGNMENT CHANGE	RCE
	70	11/26/03	BROADWAY ALIGNMENT CHANGE	RCE
	71	11/26/03	BROADWAY ALIGNMENT CHANGE	RCE
	72	11/26/03	BROADWAY ALIGNMENT CHANGE	RCE
	73	11/26/03	BROADWAY ALIGNMENT CHANGE	RCE
	74	11/26/03	BROADWAY ALIGNMENT CHANGE	RCE
	75	11/26/03	BROADWAY ALIGNMENT CHANGE	RCE
	76	11/26/03	BROADWAY ALIGNMENT CHANGE	RCE
	77	11/26/03	BROADWAY ALIGNMENT CHANGE	RCE
	78	11/26/03	BROADWAY ALIGNMENT CHANGE	RCE
	79	11/26/03	BROADWAY ALIGNMENT CHANGE	RCE
	80	11/26/03	BROADWAY ALIGNMENT CHANGE	RCE
	81	11/26/03	BROADWAY ALIGNMENT CHANGE	RCE
	82	11/26/03	BROADWAY ALIGNMENT CHANGE	RCE
	83	11/26/03	BROADWAY ALIGNMENT CHANGE	RCE
	84	11/26/03	BROADWAY ALIGNMENT CHANGE	RCE
	85	11/26/03	BROADWAY ALIGNMENT CHANGE	RCE
	86	11/26/03	BROADWAY ALIGNMENT CHANGE	RCE
	87	11/26/03	BROADWAY ALIGNMENT CHANGE	RCE
	88	11/26/03	BROADWAY ALIGNMENT CHANGE	RCE
	89	11/26/03	BROADWAY ALIGNMENT CHANGE	RCE
	90	11/26/03	BROADWAY ALIGNMENT CHANGE	RCE
	91	11/26/03	BROADWAY ALIGNMENT CHANGE	RCE
	92	11/26/03	BROADWAY ALIGNMENT CHANGE	RCE
	93	11/26/03	BROADWAY ALIGNMENT CHANGE	RCE
	94	11/26/03	BROADWAY ALIGNMENT CHANGE	RCE
	95	11/26/03	BROADWAY ALIGNMENT CHANGE	RCE
	96	11/26/03	BROADWAY ALIGNMENT CHANGE	RCE
	97	11/26/03	BROADWAY ALIGNMENT CHANGE	RCE
	98	11/26/03	BROADWAY ALIGNMENT CHANGE	RCE
	99	11/26/03	BROADWAY ALIGNMENT CHANGE	RCE
	100	11/26/03	BROADWAY ALIGNMENT CHANGE	RCE

CITY OF MILL CITY, OREGON
 MILL CITY WATER IMP. PROJECT-WATERLINES
 SW 2ND AVE.
 PLAN AND PROFILE
 STA. 119+50 TO STA. 124+00

WESTECH ENGINEERING, INC.
 CONSULTING ENGINEERS AND PLANNERS
 3841 Fairview Industrial Dr., Suite 100, Salem, OR 97302
 Phone: (503) 585-2474 Fax: (503) 585-3886
 E-mail: westech@westech-eng.com

REGISTERED PROFESSIONAL ENGINEER
 191789F
 OREGON
 JUL 15, 2003
 P. A. MOUND C.
 CERT. EXP. DECEMBER 31, 2003

AS-CONSTRUCTED

SHEET
 D13 OF 15
 JOB NUMBER
 1780.4060.0

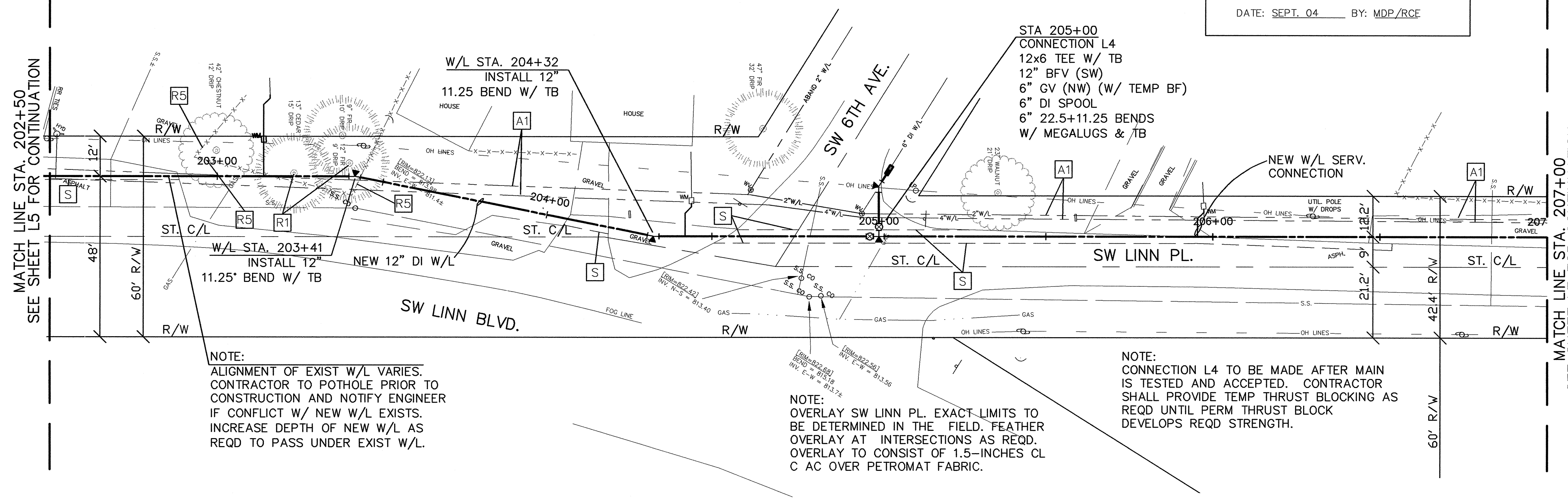
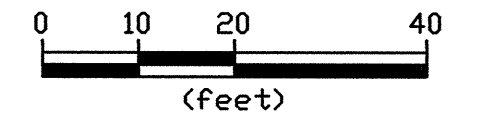
AS-BUILT

COMPILED FROM:

FINAL PROOF SURVEY _____
 DATA FURNISHED BY CONTRACTOR X
 FIELD INSPECTION RECORDS X

WESTECH ENGINEERING, INC.

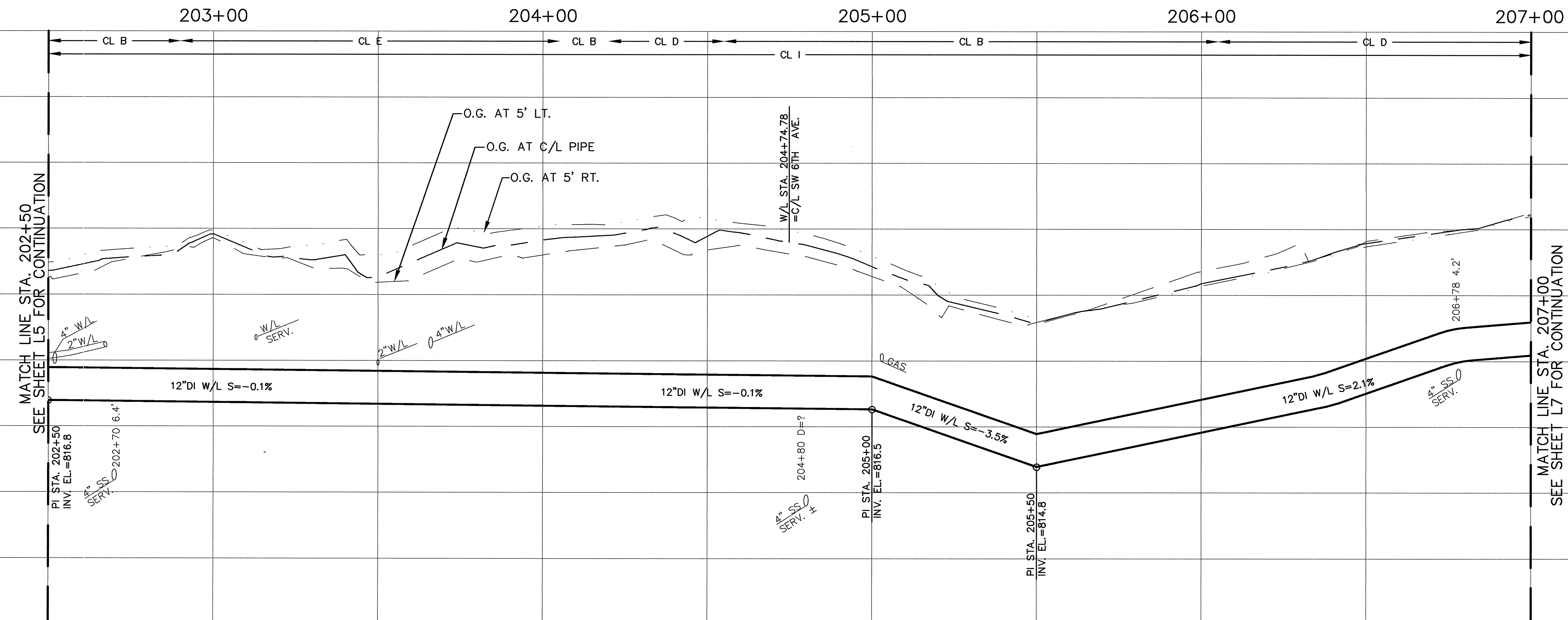
DATE: SEPT. 04 BY: MDP/RCE



NOTE:
 ALIGNMENT OF EXIST W/L VARIES.
 CONTRACTOR TO POTHOLE PRIOR TO
 CONSTRUCTION AND NOTIFY ENGINEER
 IF CONFLICT W/ NEW W/L EXISTS.
 INCREASE DEPTH OF NEW W/L AS
 REQD TO PASS UNDER EXIST W/L.

NOTE:
 OVERLAY SW LINN PL. EXACT LIMITS TO
 BE DETERMINED IN THE FIELD. FEATHER
 OVERLAY AT INTERSECTIONS AS REQD.
 OVERLAY TO CONSIST OF 1.5-INCHES CL
 C AC OVER PETROMAT FABRIC.

NOTE:
 CONNECTION L4 TO BE MADE AFTER MAIN
 IS TESTED AND ACCEPTED. CONTRACTOR
 SHALL PROVIDE TEMP THRUST BLOCKING AS
 REQD UNTIL PERM THRUST BLOCK
 DEVELOPS REQD STRENGTH.

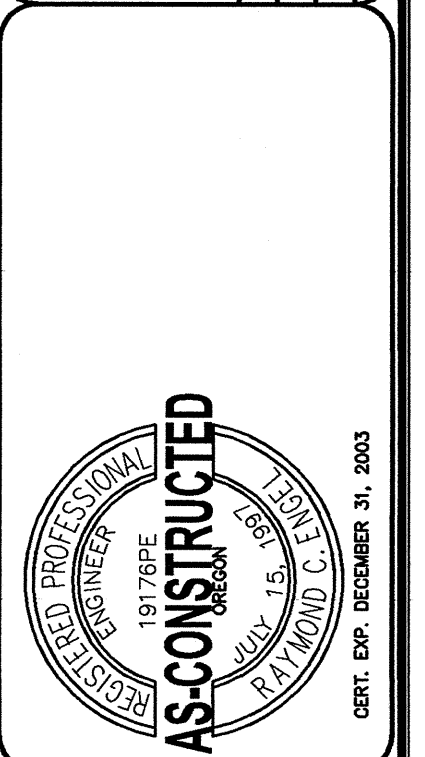


MATCH LINE STA. 202+50
 SEE SHEET L5 FOR CONTINUATION

MATCH LINE STA. 207+00
 SEE SHEET L7 FOR CONTINUATION

NO.	DATE	DESCRIPTION	BY
1	5/29/03	AGENCY REVIEW SET	RCE
2	6/2/03	BID SET	RCE

VERIFY SCALE
 BAR IS ONE INCH ON
 ORIGINAL DRAWING
 1" = 40'



WESTECH ENGINEERING, INC.
 CONSULTING ENGINEERS AND PLANNERS
AS-CONSTRUCTED
 3841 Fairview Industrial Dr. S.E., Suite 100, Salem, OR 97302
 Phone: (503) 585-2474 Fax: (503) 585-3986
 E-mail: westech@westech-eng.com

CITY OF MILL CITY, OREGON
 MILL CITY WATER IMP. PROJECT-WATERLINES
 SW LINN BLVD.
 PLAN AND PROFILE
 STA. 202+50 TO STA. 207+00

SHEET
 L6 OF 10
 JOB NUMBER
 1780.4060.0

