

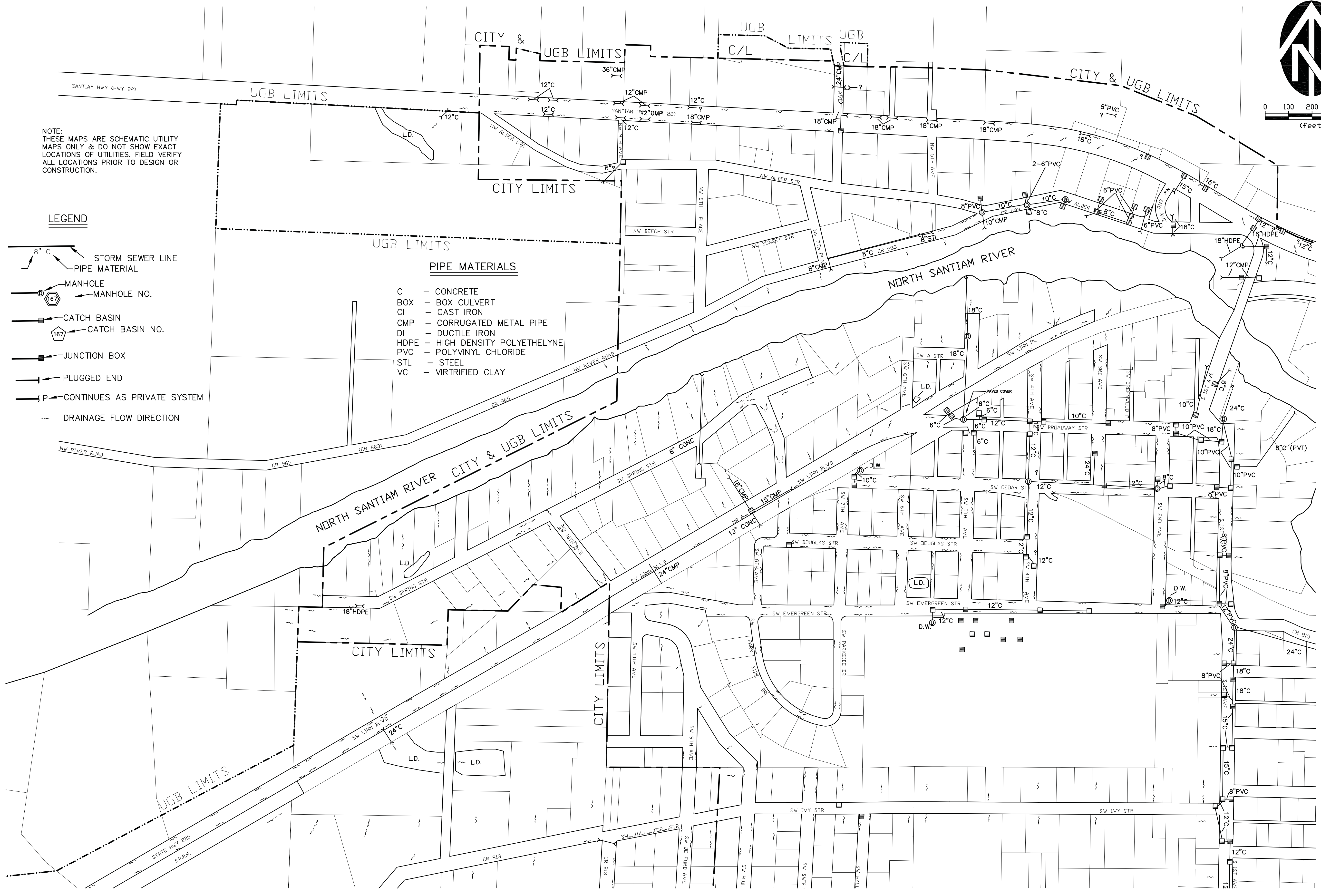
NOTE:
THESE MAPS ARE SCHEMATIC UTILITY
MAPS ONLY & DO NOT SHOW EXACT
LOCATIONS OF UTILITIES. FIELD VERIFY
ALL LOCATIONS PRIOR TO DESIGN OR
CONSTRUCTION.

LEGEND

- STORM SEWER LINE
- PIPE MATERIAL
- MANHOLE
- MANHOLE NO.
- CATCH BASIN
- CATCH BASIN NO.
- JUNCTION BOX
- PLUGGED END
- CONTINUES AS PRIVATE SYSTEM
- DRAINAGE FLOW DIRECTION

PIPE MATERIALS

- C - CONCRETE
- BOX - BOX CULVERT
- CI - CAST IRON
- CMP - CORRUGATED METAL PIPE
- DI - DUCTILE IRON
- HDPE - HIGH DENSITY POLYETHYLENE
- PVC - POLYVINYL CHLORIDE
- STL - STEEL
- VC - VIRTRIFIED CLAY



Feb 25, 2019 - 4:01pm
R:\Maps\City Utility Maps Mill City\MAPS\Mill City Utility Map.dwg (SD(NW).tab)

TOWNSHIP 9 SOUTH, RANGE 3 EAST, W.M.

NO.	DATE	DESCRIPTION	BY
1	JAN 07		

VERIFY SCALE
BAR IS ONE INCH ON
ORIGINAL DRAWING
1" = 100'
THIS DRAWING IS FOR
CONSTRUCTION PURPOSES
ONLY. IT IS NOT TO BE
USED FOR ANY OTHER
PURPOSES WITHOUT THE
WRITTEN CONSENT OF
WESTTECH ENGINEERING, INC.

MAP UPDATED: ±2007

WESTTECH ENGINEERING, INC.
CONSULTING ENGINEERS AND PLANNERS

3841 Fairview Industrial Dr., S.E., Suite 100, Salem, OR 97302
Phone: (503) 585-2474 Fax: (503) 585-3986
E-mail: westtech@westtech-eng.com

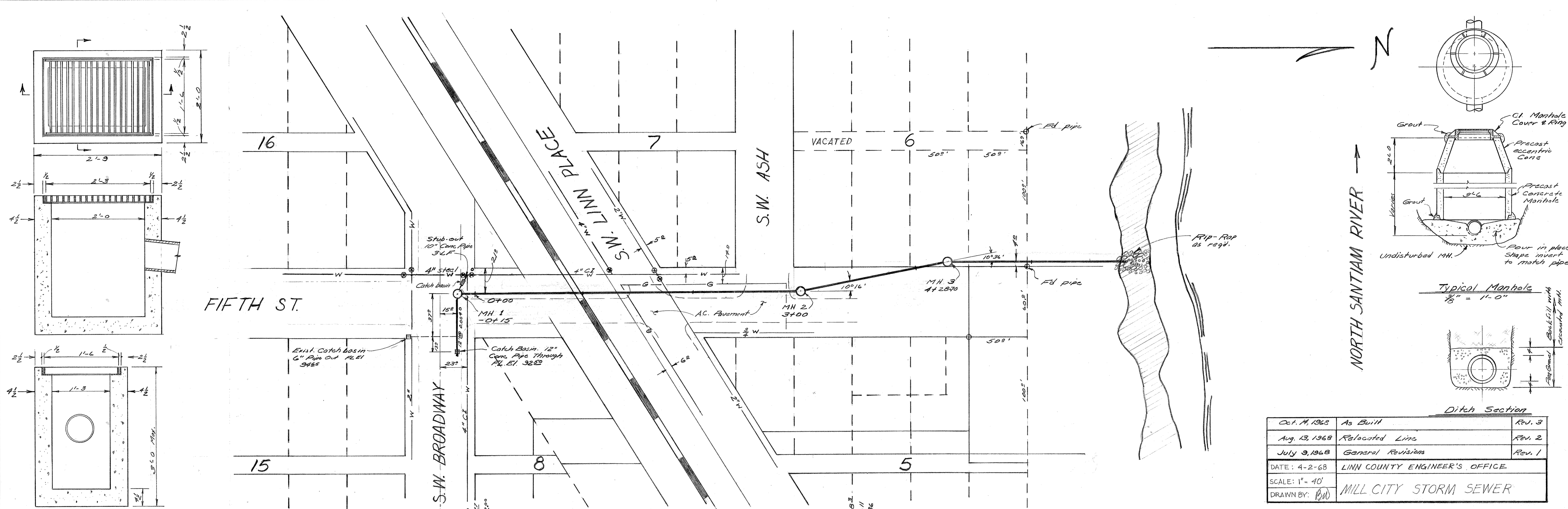
CITY OF MILL CITY, OREGON

**NORTHWEST
STORM DRAIN
SYSTEM MAP**

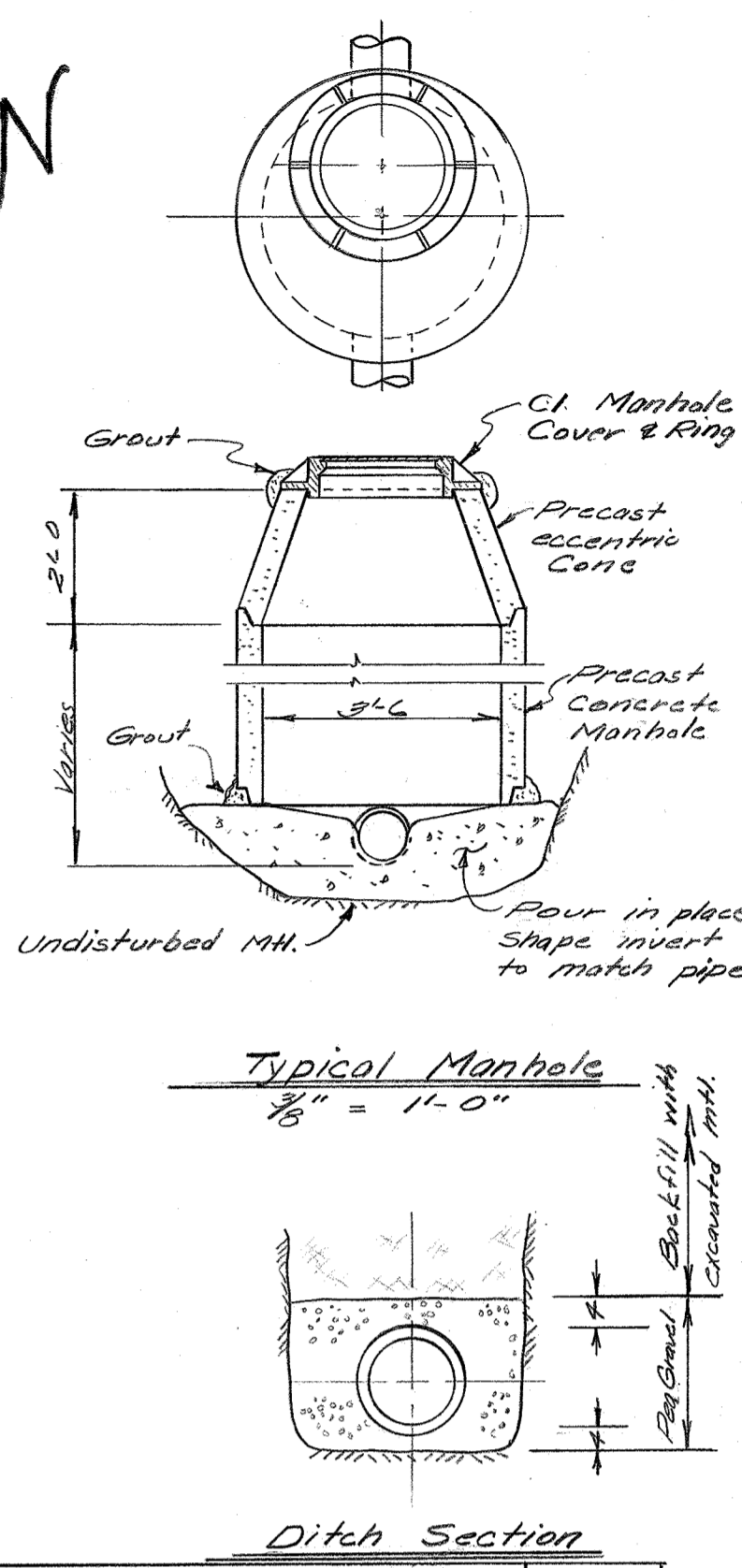
SHEET
1 OF 4
JOB NUMBER
1780.0000.0

FINAL SURVEY
 SURVEYED BY: _____ DATE: _____
 NOTE BOOK NO.: _____
 TEMPLATE AREAS CHECKED: _____

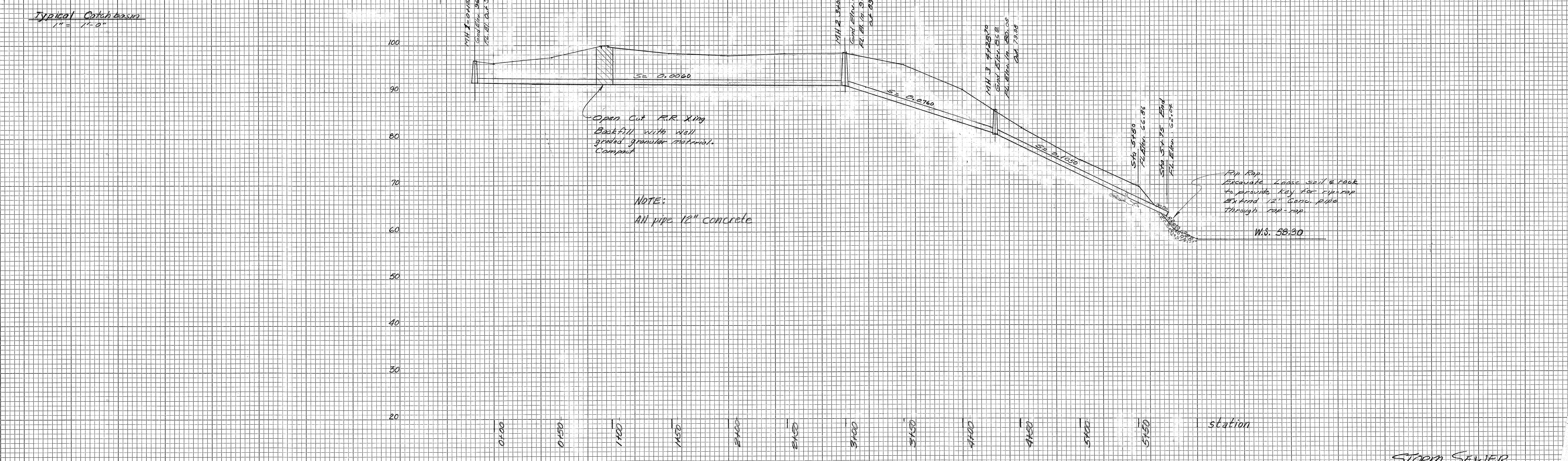
ORIGINAL SURVEY
 SURVEYED BY: _____ DATE: _____
 NOTE BOOK NO.: _____
 TEMPLATE AREAS CHECKED: _____



Typical Catch basin
 11' x 1'-0"



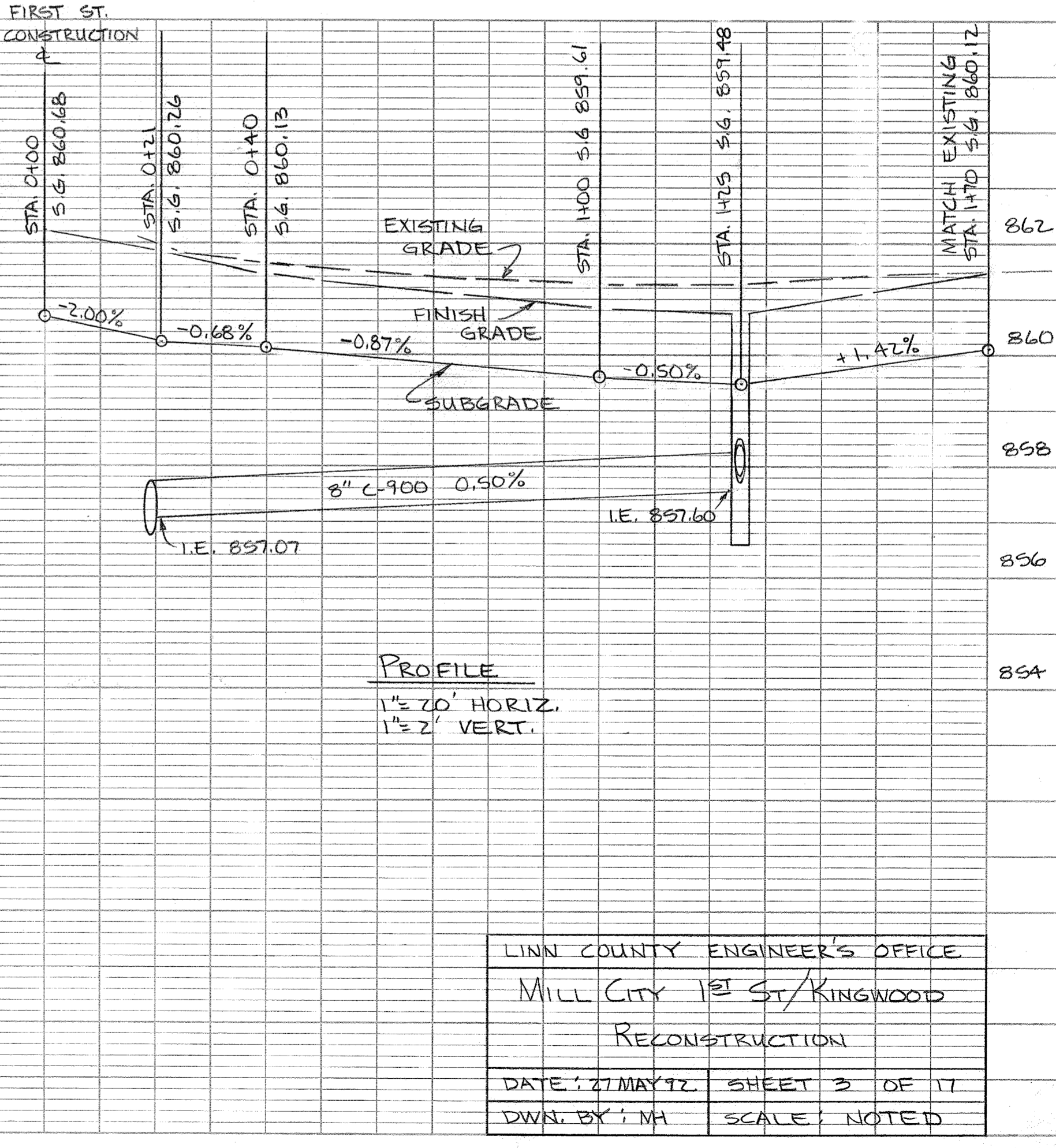
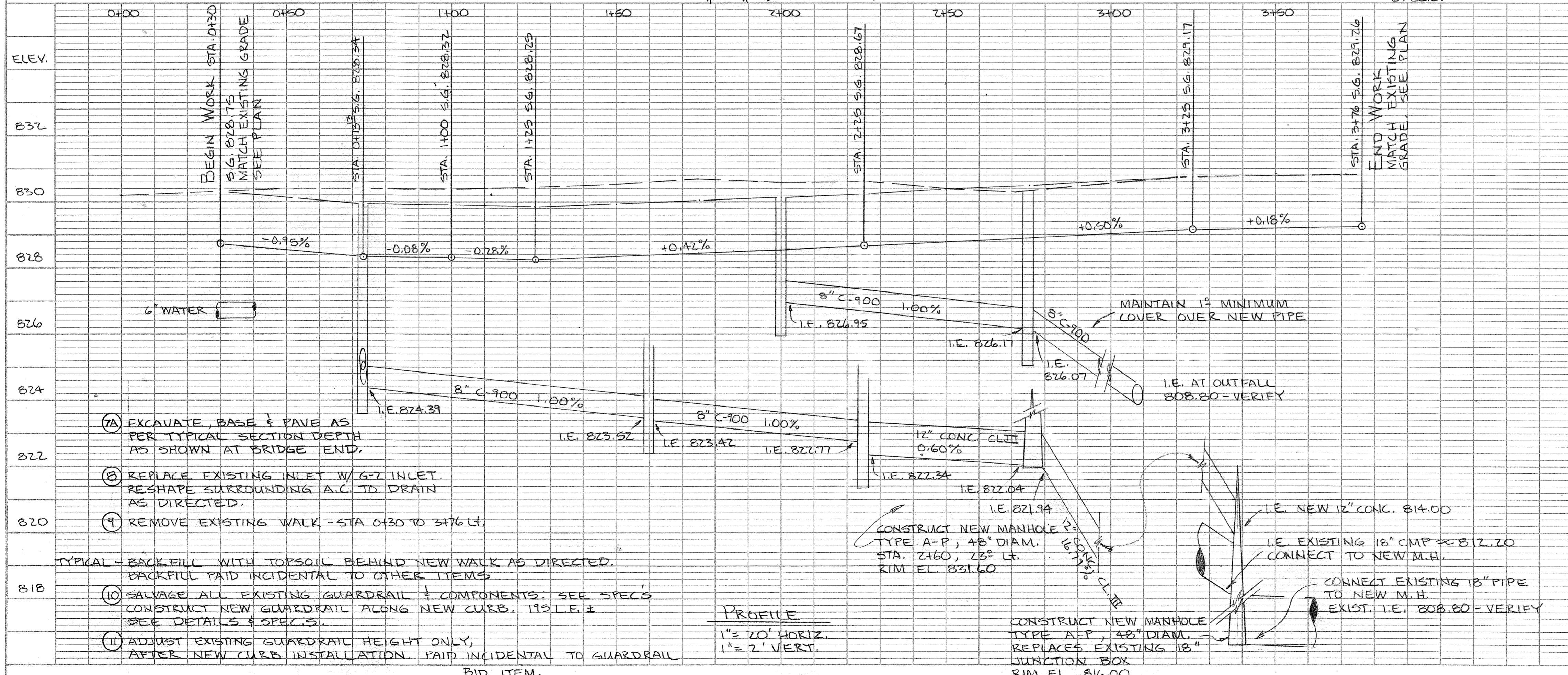
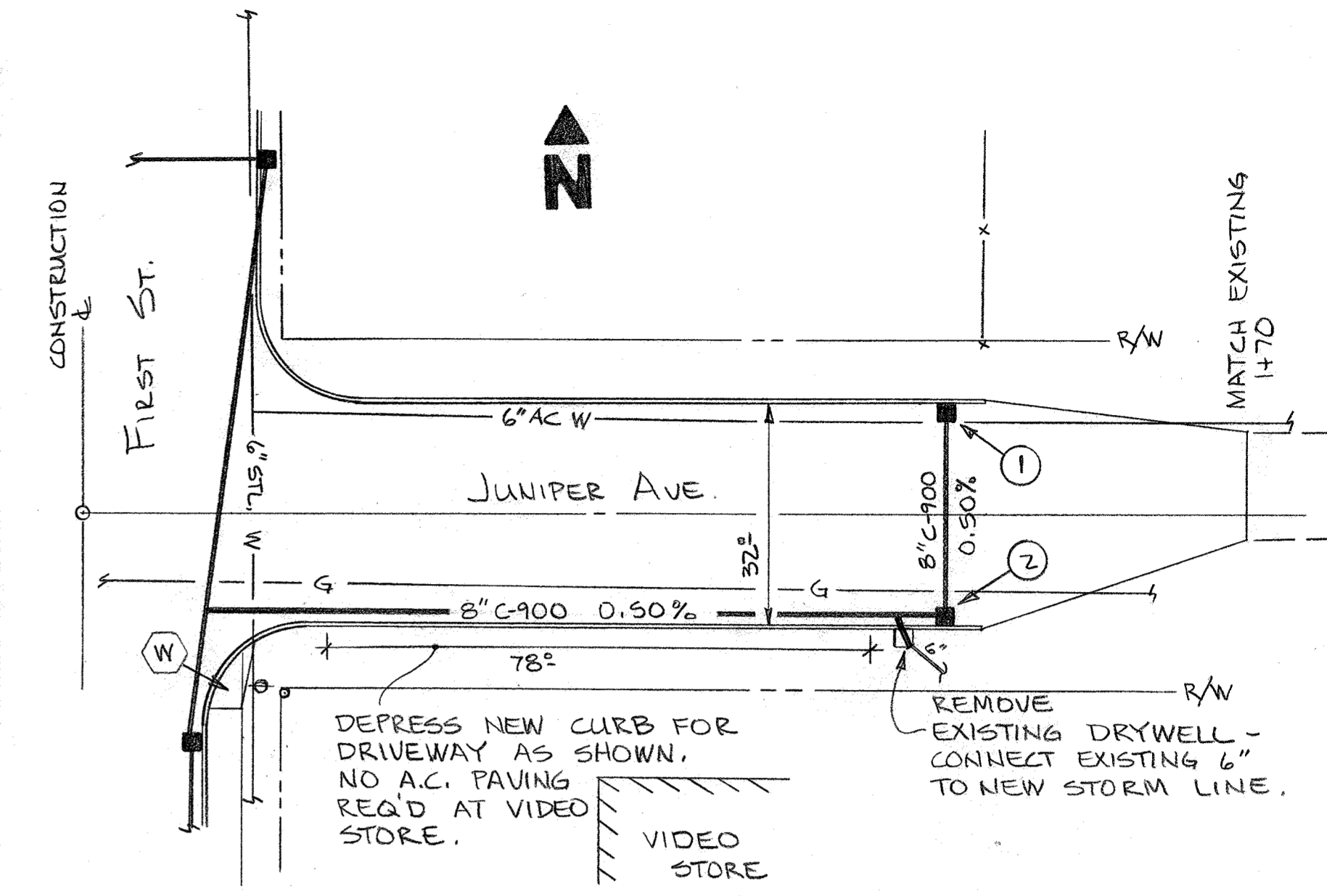
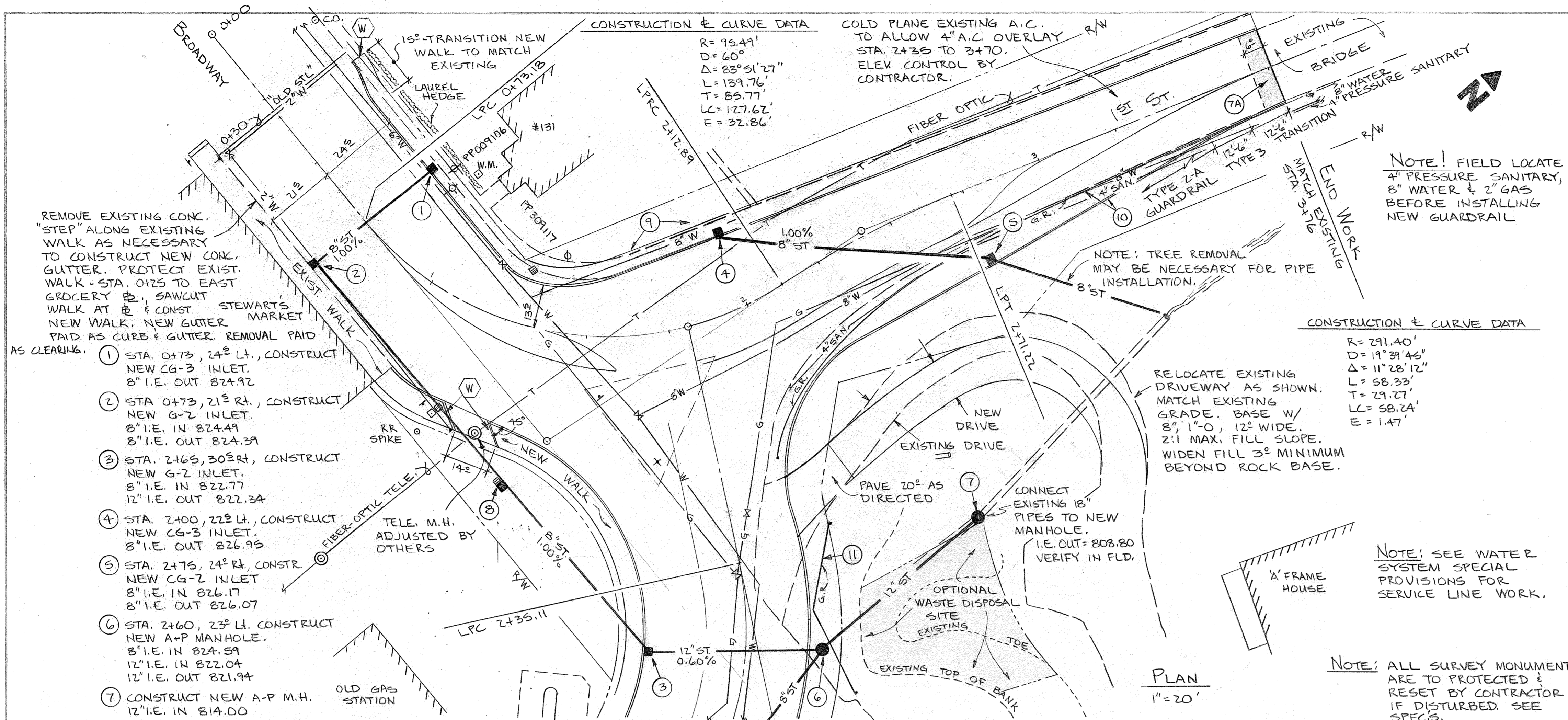
Oct. 11, 1963	As Built	Rev. 3
Aug. 13, 1968	Relocated Line	Rev. 2
July 9, 1968	General Revisions	Rev. 1
DATE: 4-2-68	LINN COUNTY ENGINEER'S OFFICE	
SCALE: 1" = 40'	MILL CITY STORM SEWER	
DRAWN BY: <i>BD</i>		



STORM SEWER
 C.R.#6 Lyons-Mill City A

DATE	
BY	
SURVEYED	
NOTE BOOK	
ALIGNMENT CHECKED	
RT. OF WAY CHECKED	
NO.	

DATE	
BY	
SURVEYED	
NOTE BOOK	
GRADES CHECKED	
B. M. NOTED	
STRUCTURE NOTATIONS CHECKED	
NO.	



LINN COUNTY ENGINEER'S OFFICE
 MILL CITY 1st St/KINGWOOD
 RECONSTRUCTION
 DATE: 27 MAY 92 SHEET 3 OF 17
 DWN. BY: JNH SCALE: NOTED