

LINN COUNTY WILDFIRE READY NIGHT

Welcome everyone!

*Please sign in & grab
yourself pizza and a seat.*

The program will shortly!



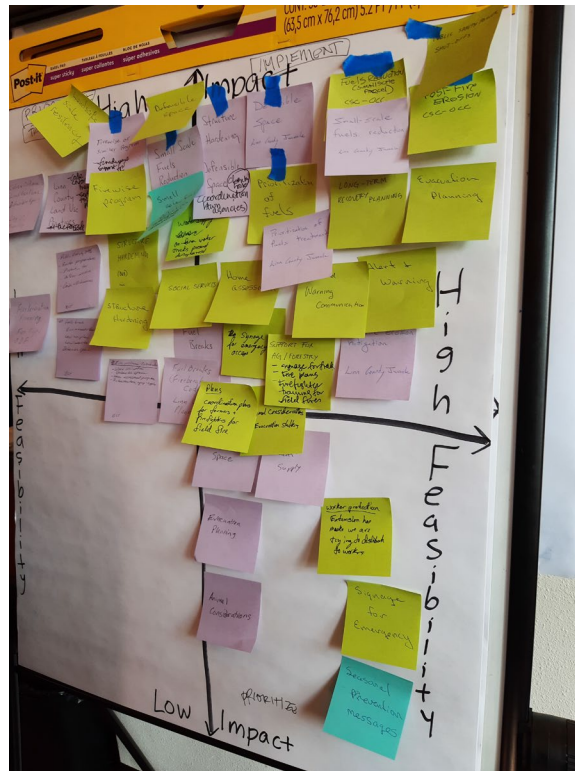
QUESTIONS?
CONTACT
KBENTZ@CO.LINN.OR.US

Tonight's Schedule

- Words of welcome
- Introduction: Linn County CWPP
- What is our wildfire risk in Linn County?
- The big goals of the Linn County Wildfire Protection Plan
- Updates from agency partners
- Taking action: how to prepare for wildfires at your home
- Mingle and chat: soliciting your feedback, concerns and priorities



An Introduction to Linn County's Community Wildfire Protection Plan



What is our wildfire risk in Linn County?

Presented by Kate Bentz, Linn County Associate Planner

Data from the Linn CWPP Wildfire Risk Assessment

Special thanks to:

Cara Walter, Linn County GIS

Andy McEvoy, Oregon State University - College of Forestry

What is a risk assessment?

- It is a look at how **fire** affects the things that we care about inside our county.

What are assets (made by humans) and resources (things that exist naturally) that we care about? What things do wildfires impact?

- It considers *both* potential **threats** and potential **benefits**.
- It is informational only, it is NOT a tool for regulation.



Why do we do it?

- A risk assessment helps land managers, community planners, and emergency response professionals **make informed decisions on which areas to prioritize and what types of projects we should be doing there. When those areas/projects are named and prioritized, grant funding streams may open up.**



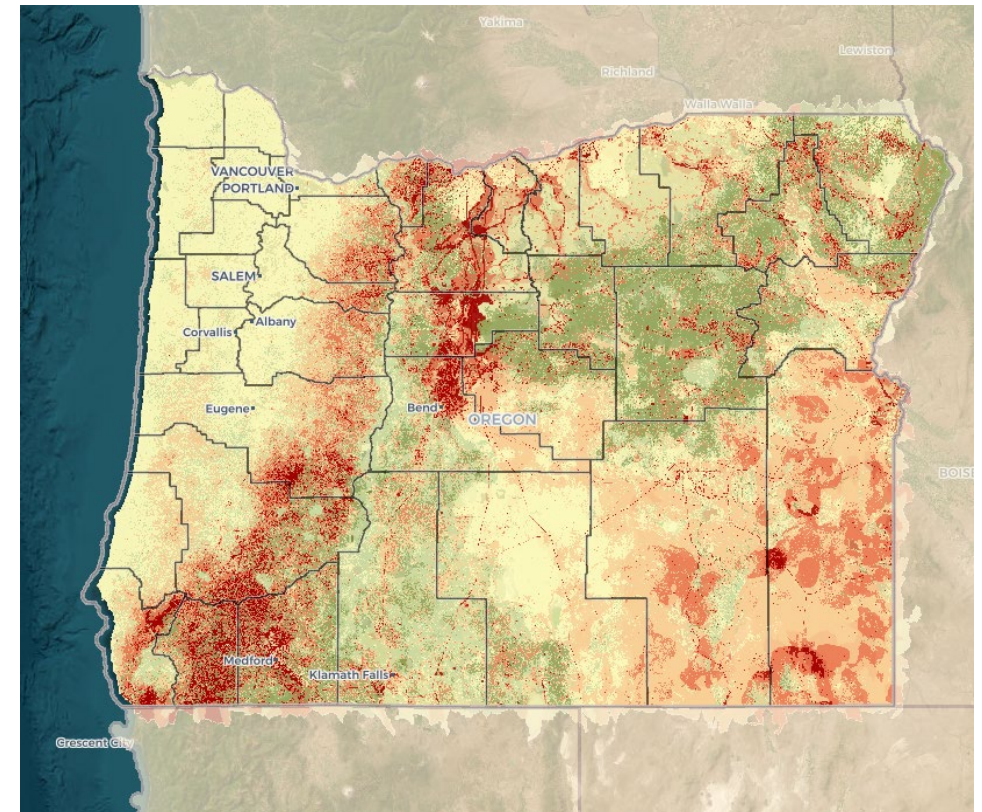
Where does the data come from?

We used the latest scientific report by Oregon State University (2023) to understand state/countywide **risks** and **benefits**.

and

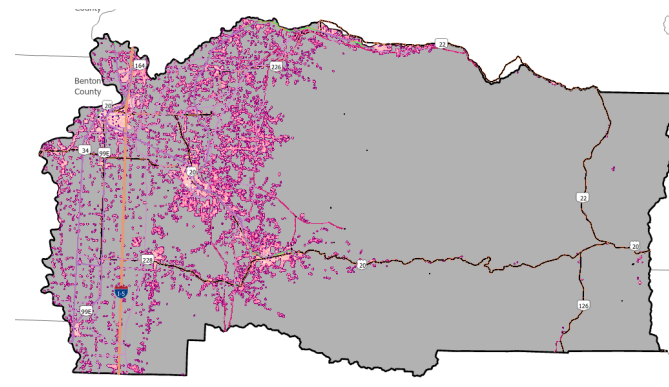
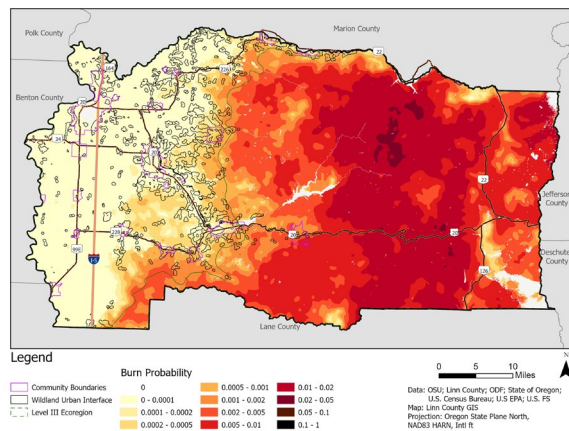
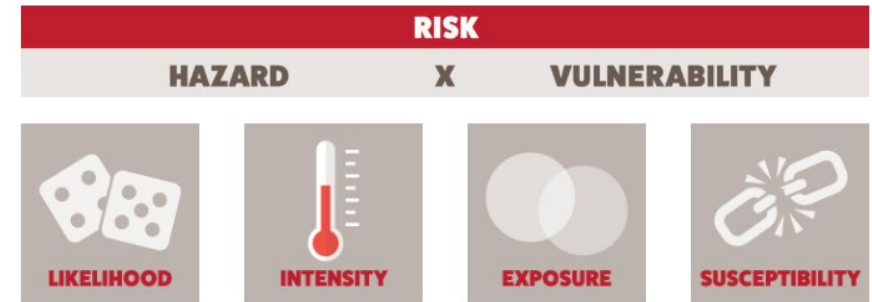
We polled our local fire response agencies to identify their **priority areas of concern**.

PACIFIC NORTHWEST QUANTITATIVE WILDFIRE RISK ASSESSMENT



How do you measure Overall Risk?

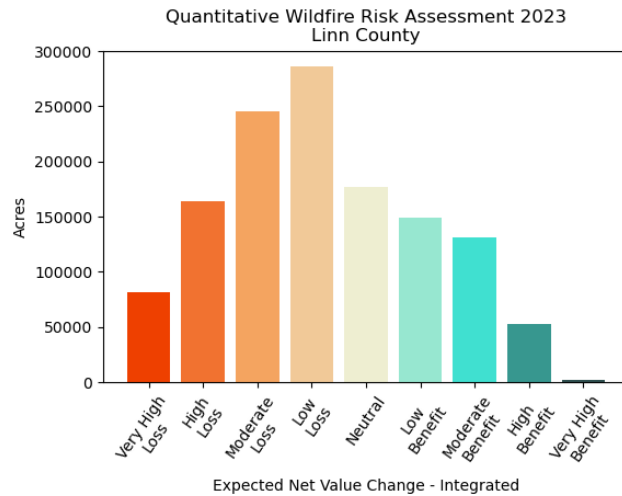
- **Likelihood:** How likely will a fire start somewhere, based on historic fire patterns
- **Intensity:** How intense will that fire be, based on fuel types, slope, weather patterns, etc.
- **Exposure:** How close are the things we care about to places that may catch on fire, based on distance
- **Susceptibility:** How positive or negative a fire would be for an asset/resource that exists in the area



Covariate #1	Covariate #2 Size Class (quadratic mean diameter)	Fire Intensity Level (flame length)					
		FIL 1 0 - 2'	FIL 2 2 - 4'	FIL 3 4 - 6'	FIL 4 6 - 8'	FIL 5 8 - 12'	FIL 6 >12'
FRG 1	< 10"	10	-20	-50	-100	-100	-100
	10 - 20"	50	30	0	-30	-75	-100
	>20"	50	30	0	-10	-50	-100
FRG 3	< 10"	0	-30	-60	-100	-100	-100
	10 - 20"	20	0	-40	-80	-80	-100
	>20"	30	10	-20	-80	-80	-100
FRG 4/5	< 10"	-20	-40	-80	-100	-100	-100
	10 - 20"	-20	-40	-60	-80	-100	-100
	>20"	-20	-40	-60	-80	-100	-100

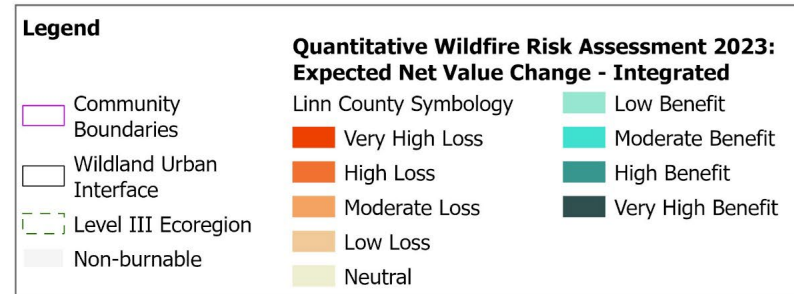
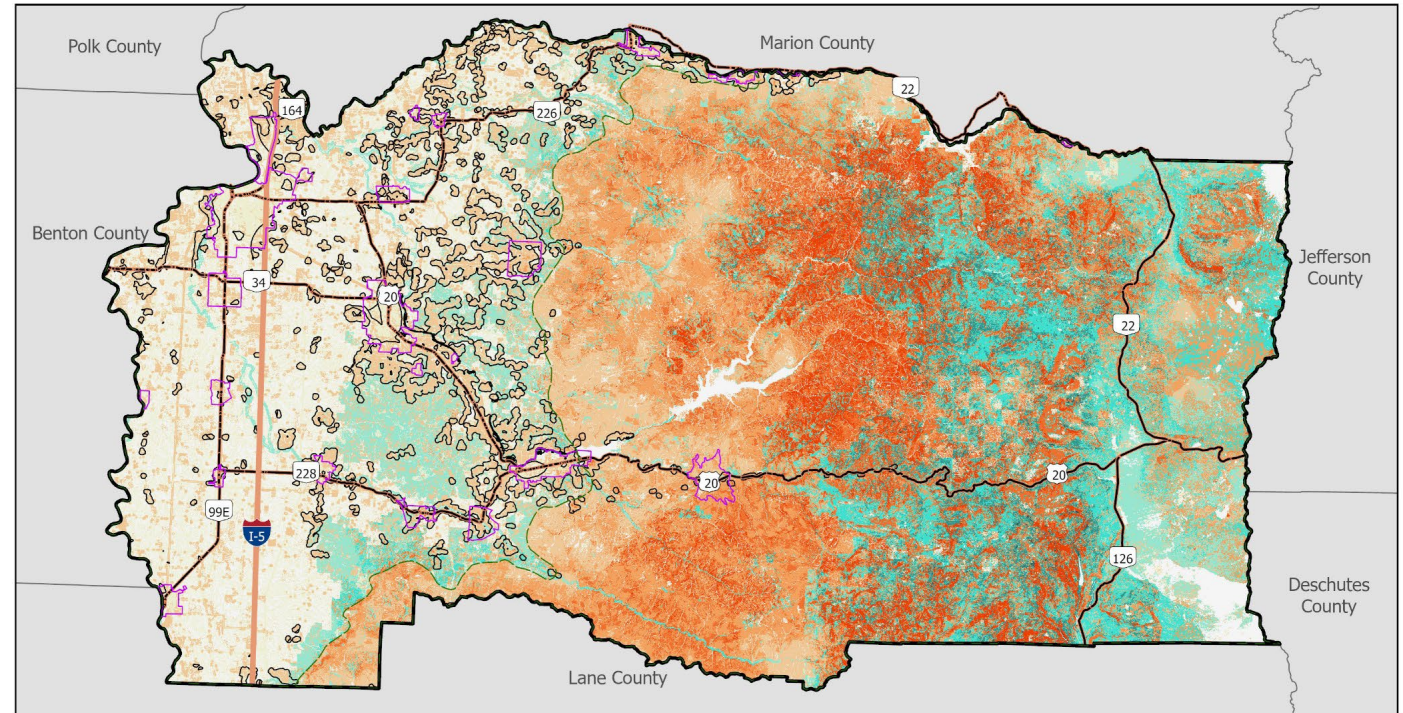
What are the results?

- Results trend to outcomes of low to moderate loss across entire county



Regional takeaways-

- West Linn County- some susceptibility but low likelihood = outcomes are **neutral** to **low negative**
- Cascade foothills- more likelihood for fire starts than the valley, but mixed outcomes = some **low positive** & **low negative**
- Central Cascades- overlapping important values (timber, drinking water, recreation, habitat) + high fire likelihood & intensity = **worst outcomes**



Categories (Highly Valued Resources and Assets) that OSU factored into the 2023 QWRA which contributed to the overall scores in the Integrated Risk Assessment: People & Property, Infrastructure, Drinking Water, Timber, Agriculture, Ecological Integrity, Wildlife, and Recreation.

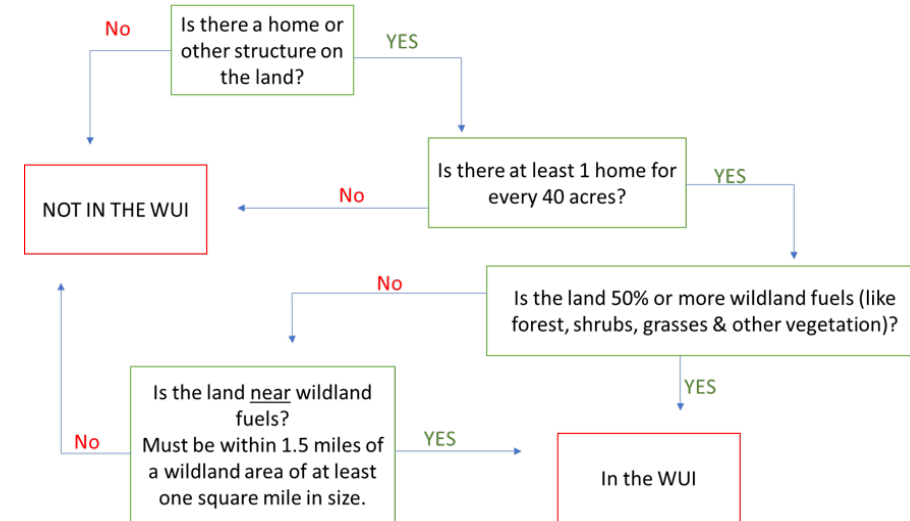
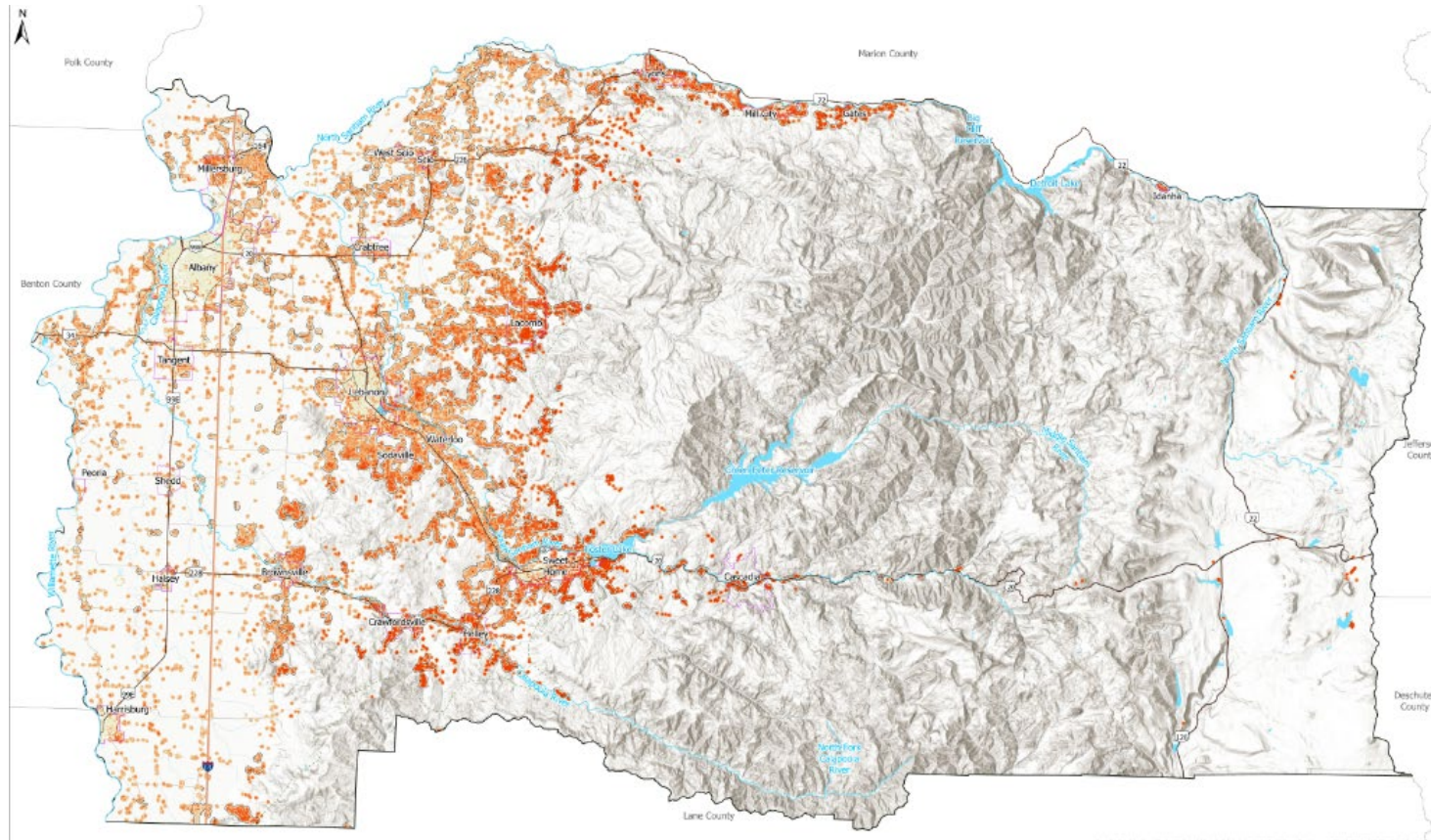
Data: USFS; ODF; OSU; Linn County; State of Oregon; U.S. Census Bureau, U.S. EPA
Map: Linn County GIS

Projection: Oregon State Plane North, NAD83 HARN, Intl ft



What is a WUI area?

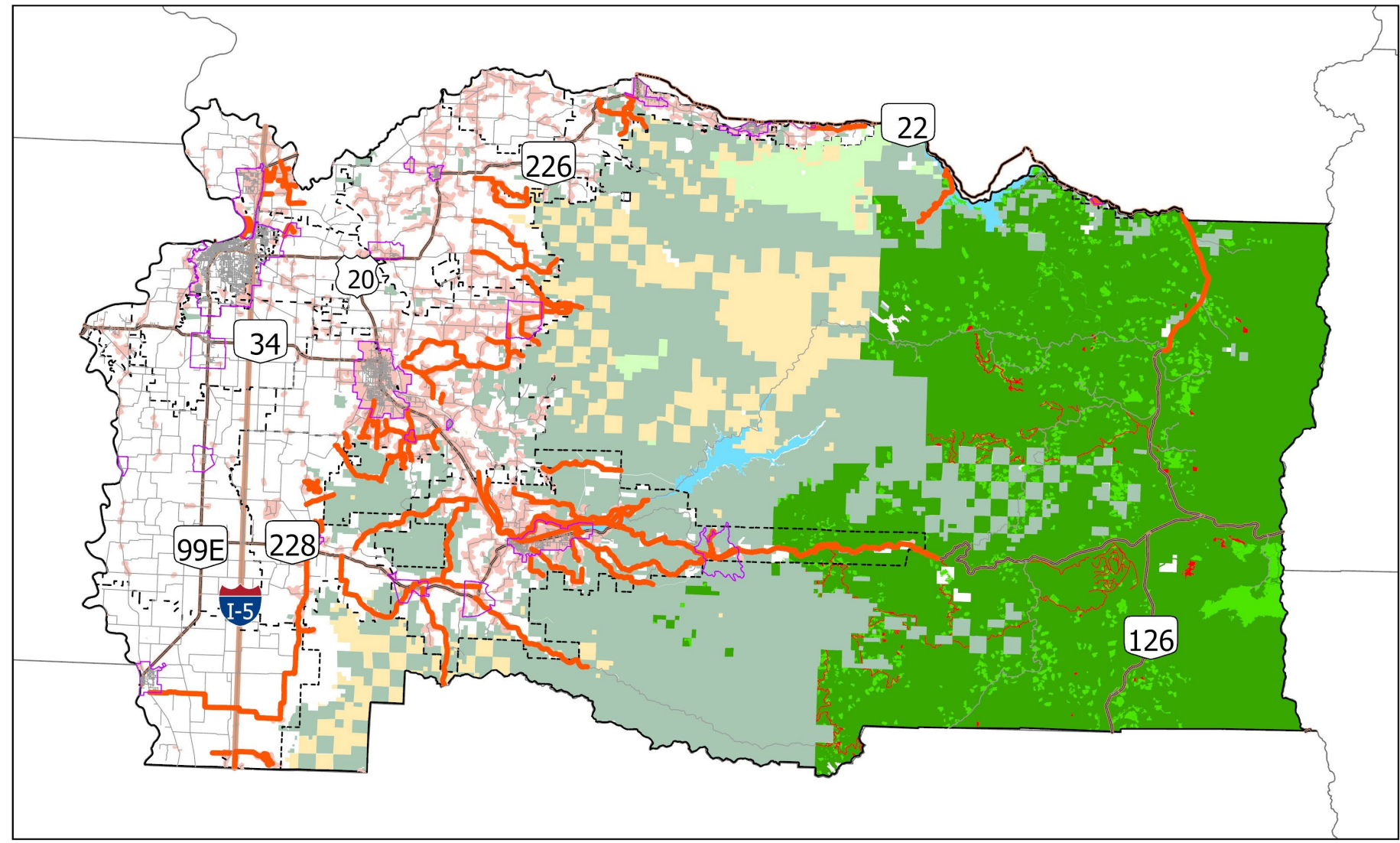
WUI = Wildland-Urban Interface (but not always so urban)
WUI Communities- increasing exposure & intensity generally as you go more east = **low** risk in the western areas to **high** risk in eastern areas





Finally, what does our local knowledge add to the conversation?

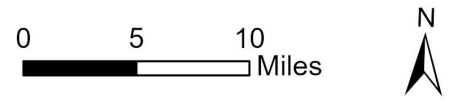
Priority areas for treatment, identified by local fire districts, Oregon Dept. of Forestry, and the Forest Service



Fire Protection Agencies Priority Areas for Mitigation

Community Boundaries	Wildland Urban Interface
Fire District Boundaries	Oregon Department of Forestry
Roads	U.S. BLM
Priority Areas for Mitigation	U.S. Bureau of Reclamation
USFS Hazardous Fuel Treatments Planned	U.S. Corps of Engineers
USFS Hazardous Fuel Treatments Completed	U.S. Forest Service
	Private Forestland

This map was developed in consultation with local fire protection districts and ODF. Priority areas are visualized as corridors along roadways, rivers, and railroads, however many of these locations also include surrounding WUI and/or unpopulated lands. Please see the Priority Areas Appendix for more information about each location.



Data: Linn County Rural Fire Districts; ODF; USFS; Linn County; State of Oregon; U.S. Census Bureau
 Map: Linn County GIS
 Projection: Oregon State Plane North, NAD83 HARN, Intl ft

What's next, and where can I find more risk information for myself?

- Risk assessment findings help local & regional partners develop project ideas and make competitive grant applications -> active steps to help decrease wildfire risk across the County.
- Check out [WildfireRisk.org](https://www.wildfirerisk.org) (national data) and [OregonExplorer.info](https://oregonexplorer.info) – CWPP Planning Tool (state data) for more around this topic.
- Check out the final CWPP when it becomes available on the County Website- bit.ly/linncwpp





CWPP Goals and Action Items



Goal 1: Enhance wildfire and emergency response and recovery capabilities to protect life, the built environment, and natural systems.

- 1.1. Assess and address deficiencies in equipment and resources available for wildland firefighting for rural fire departments.
- 1.3. Improve addressing and visibility in rural areas.
- 1.11. Review emergency communication systems and procedures to improve accessibility by residents and consistent messaging across jurisdictions.



CWPP Goals and Action Items

Goal 2: Empower residents and other stakeholders with knowledge, decision-making tools, and resources to understand and reduce wildfire risks and increase preparedness.

2.2. Expand and promote existing communication campaigns to educate visitors and recreators about wildfire prevention (i.e., accidental ignitions) and risk mitigation while visiting Linn County.

2.6. Establish and maintain programs to aid vulnerable populations during unhealthy and hazardous air quality conditions caused by wildfire.

CWPP Goals and Action Items

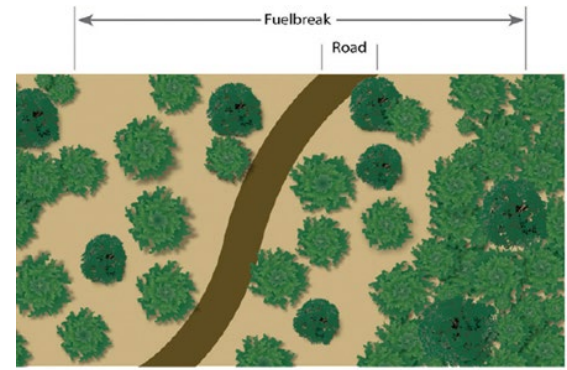


Goal 3: Reduce structural ignitability through the use of non-regulatory incentives.

- 3.1. Enhance structural protection in structurally unprotected areas.
- 3.3. Share information about State fire hardening building code standards for voluntary use and seek funding for a home hardening cost-share/incentive program.
- 3.4. Seek funding to upgrade critical infrastructure sites through building hardening retrofits... and water supply improvements for identified critical infrastructure throughout Linn County.



CWPP Goals and Action Items



Goal 4: Prioritize and implement fuels treatment projects on private and public land to reduce risk, increase resiliency, and create defensible landscapes.

4.6. Implement landowner assistance programs to support creating defensible space around communities particularly with vulnerable populations and incentivize fuels reduction activities. Create local workforce development opportunities through employment of fuels reduction crews.

4.9. Work with forestland managers and watershed managers to protect watershed health in high-risk areas while reducing wildfire hazards.

CWPP Goals and Action Items



Goal 5: Increase opportunities for collaboration, coordination, and building capacity to implement wildfire projects.

5.1. Create and formalize a CWPP Advisory Committee to oversee implementation, identify and coordinate funding opportunities, and sustain the Linn County Wildfire Protection Plan.

5.3. Resource a Fire Adapted Communities (or general Hazards Mitigation) Coordinator position to coordinate implementation of the CWPP, secure external funding, manage community-focused education and support programs, and seek additional opportunities for partnerships that advance wildfire resilience in Linn County.

Agency updates: Lighting Talks

- **Linn County Fire Defense Board / Local Fire Districts**
- **Linn County Emergency Management**
- **Oregon Department of Forestry**
- **Willamette National Forest**



Defensible Space Assessment Program

How to Request an Assessment



What is the OSFM Defensible Space Assessment Program?

An Interagency Partnership

The OSFM has partnered with ODF and local fire agencies to provide free defensible space and wildfire preparedness assessments to private property owners in Oregon.



What is the OSFM Defensible Space Assessment Program?

An Interagency Partnership



OSFM

Deputy State Fire Marshals will conduct assessments on state and private properties not serviced by a local fire agency.



Fire Agencies

Fire agencies may choose to participate in the program and conduct assessments on private properties within their jurisdiction.



ODF

The Oregon Department of Forestry will conduct assessments only on private properties eligible for assistance from their grants.



How do I request an Assessment?

How to Request an
Assessment



Scan
the
QR
Code



or...



How to Request an Assessment

Visit

OregonDefensibleSpace.org

and click "Schedule a free assessment."

Connect with Your Local Agency

Schedule a free assessment

Protect Your Property From Wildfire

What can I do on my property?

This will open a new window...



When the map pans to your address, zoom in and Click on your house.

How to Request an Assessment

Oregon Defensible Space

OSFM is partnering with local fire agencies across the state to provide Oregonians with access to Defensible Space Assessments.

To find your assessment provider:

- Enter your address in the search bar below and press enter.
- When the map pans to the address you entered, zoom in and **Click on your house.**
- The contact information below updates each time you click a place on the map.

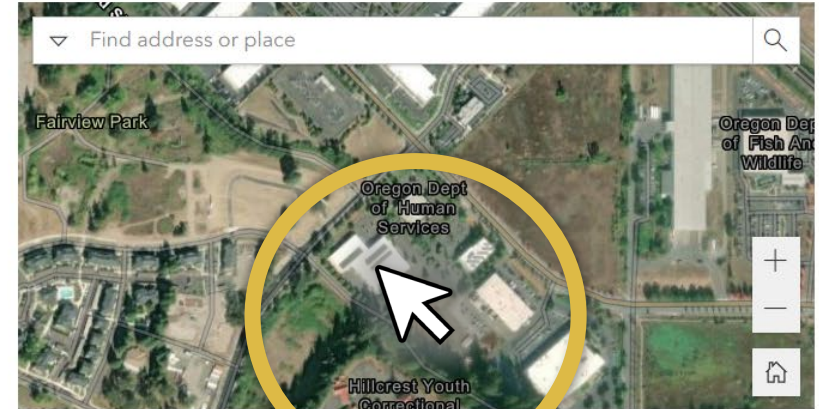
3991 Fairview Industrial Dr SE, Salem, OR, 97302, USA

For the last selected location on the map, the Defensible Space Assessment provider is:

Select a location on the map

Contact Details:

Phone:
Email:
Weblink:



Learn More About the Defensible Space Program

The Defensible Space Assessment Program was developed in collaboration with fire service and public stakeholders in the State of Oregon, including the Governor's Fire Service Policy Council, the Oregon Fire Marshal Association, the Oregon Fire Chiefs Association, the Oregon Department of Forestry, the Department of Consumer and Business Services, the Oregon Volunteer Firefighters Association, and the Oregon State Fire Marshal.





Enter your address in the search bar and press enter.

How to Request an Assessment

Oregon Defensible Space

OSFM is partnering with local fire agencies across the state to provide Oregonians with access to Defensible Space Assessments.

To find your assessment provider:

- Enter your address in the search bar below and press enter.
- When the map pans to the address you entered, zoom in and **Click on your house**. The contact information below updates each time you click a place on the map.

Search an address here



For the last selected location on the map, the Defensible Space Assessment provider is:

Select a location on the map

Contact Details:

Phone:

Email:

Weblink:



[Learn More About the Defensible Space Program](#)

The Defensible Space Assessment Program was developed in collaboration with fire service and public stakeholders in the State of Oregon, including the Governor's Fire Service Policy Council, the Oregon Fire Marshal Association, the Oregon Fire Chiefs Association, the Oregon Department of Forestry, the Department of Consumer and Business Services, the Oregon Volunteer Firefighters Association, and the Oregon State Fire Marshal.





The contact information for the Assessment provider will update.

How to Request an Assessment

Oregon Defensible Space

OSFM is partnering with local fire agencies across the state to provide Oregonians with access to Defensible Space Assessments.

To find your assessment provider:

- Enter your address in the search bar below and press enter.
- When the map pans to the address you entered, zoom in and **Click on your house**.
- The contact information below updates each time you click a place on the map.

3991 Fairview Industrial Dr SE, Salem, OR, 97302, USA

For the last selected location on the map,
the Defensible Space Assessment provider is:

Oregon State Fire Marshal

Contact Details:

Phone: 503-934-0874

Email:

Weblink: <https://app.smartsheet.com/b/form/028ac2f3fc9a42a9b3626082f797c208>



Learn More About the Defensible Space Program

The Defensible Space Assessment Program was developed in collaboration with fire service and public stakeholders in the State of Oregon, including the Governor's Fire Service Policy Council, the Oregon Fire Marshal Association, the Oregon Fire Chiefs Association, the Oregon Department of Forestry, the Department of Consumer and Business Services, the Oregon Volunteer Firefighters Association, and the Oregon State Fire Marshal.





The contact information for the Assessment provider will update.

Example:

For the last selected location on the map,
the Defensible Space Assessment provider is:

Oregon State Fire Marshal

Contact Details:

Phone: 503-934-0874

Email:

Weblink: <https://app.smartsheet.com/b/form/028ac2f3fc9a42a9b3626082f797c208>

Call

or

Online

(Webform)



OREGON
DEFENSIBLE SPACE



The contact information for the Assessment provider will update.

Example:

For the last selected location on the map,
the Defensible Space Assessment provider is:

Albany Fire Department

Contact Details:

Phone: 541-917-7734

Email:

Weblink:

Call



OREGON
DEFENSIBLE SPACE



The contact information for the Assessment provider will update.


Example:

For the last selected location on the map,
the Defensible Space Assessment provider is:

Sweet Home Fire District

Contact Details:

Phone: (541) 367-5882
Email: cwrr@sweethomefire.org
Weblink: <https://sweethomefire.org/community-wildfire-information/>



OREGON
DEFENSIBLE SPACE

Call

or

Online

(Email + Webform)

How to Request an
Assessment



Questions?

OSFM Defensible Space Program

osfm.defensiblespace@osfm.oregon.gov

503-934-0874