



2018 Data

Linn County Health Department

GROWING HEALTHY FUTURES

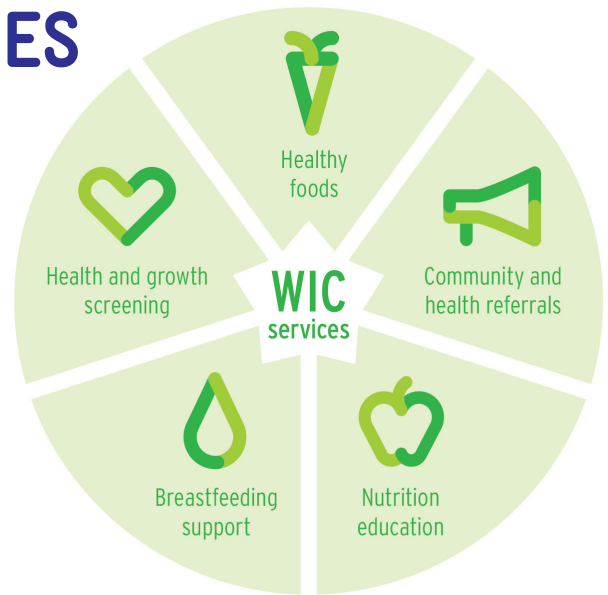
Participating in WIC supports the long-term health of women, infants, children and families. WIC is proven to support longer pregnancies and positive birth outcomes.¹

For children, the American Academy of Pediatrics identifies three foundations of healthy child development:

- **Stable, Responsive Relationships**
- **Safe, Supportive Environments**
- **Appropriate Nutrition²**

WIC is the premier public health nutrition program, and it supports all three of these developmental foundations.

1) Fingar et al, Journal of Maternal and Child Health, 2017. 2) American Academy of Pediatrics, Policy statement, 2012.



WHO WE SERVED



4,936

Women, infants and children who participated in WIC

40%

of all pregnant women served by WIC

2,784

WIC families served



67%

are working families

5 out of 7

participants are infants and children under five



BREASTFEEDING

94%

WIC moms start out breastfeeding

35%

WIC moms breastfeed exclusively for six months



PUBLIC HEALTH DIVISION

Special Supplemental Nutrition Program for Women, Infants & Children



2018 Data

Linn County Health Department

ECONOMIC BENEFITS OF WIC

15 Local stores accepting WIC:

- 5 Independent stores
- 1 Local or regional chain
- 7 National chain stores
- 2 Pharmacies

\$1,853,428

Total dollars spent by this agency's participants at local stores

HEALTHY FOOD ACCESS

To be a WIC store, it must carry:

- At least 8 kinds of fresh fruits and vegetables
- Whole grain products
- Lowfat milk
- Lowfat yogurt
- Canned/dried beans



WIC FARM DIRECT NUTRITION PROGRAM (FDNP)

The Farm Direct Nutrition Program (FDNP) provides families with an additional source of nutritious food and education on selecting and preparing fresh produce.

28 Participating Farmers

at local farmers markets and farm stands

\$35,412

FDNP dollars paid to local farmers

WIC CLINIC SITES

- Albany
- Lebanon
- Sweet Home
- Harrisburg

For more details about these numbers, please visit:

<https://www.oregon.gov/OHA/PH/HEALTHYPEOPLEFAMILIES/WIC/Pages/annual.aspx>

Contact your local WIC office

541-967-3888

www.co.linn.or.us/health/public_health/wic.htm

Contact the Oregon WIC Program

800-735-2900

www.healthoregon.org/wic

You can get this document in other languages, large print, braille, or a format you prefer. Contact Oregon WIC at 971-673-0040. We accept all relay calls, or you can dial 711.